

For Research Use Only

ATL3 Polyclonal antibody, PBS Only

Catalog Number: 16921-1-PBS

Featured Product



Basic Information

Catalog Number:

16921-1-PBS

Size:

100ug, Concentration: 1 mg/ml by Nanodrop;

Source:

Rabbit

Isotype:

IgG

Immunogen Catalog Number:

AG10279

GenBank Accession Number:

BC077727

GeneID (NCBI):

25923

UNIPROT ID:

Q6DD88

Full Name:

atlastin GTPase 3

Calculated MW:

541 aa, 61 kDa

Observed MW:

61 kDa

Purification Method:

Antigen affinity purification

Applications

Tested Applications:

WB, IHC, IF/ICC, IP, Indirect ELISA

Species Specificity:

human, mouse, rat

Background Information

ATL3, belonging to a class of dynamin-like GTPase, was reported to mediate ER fusion. ATL3 is required for the proper formation of the network of interconnected tubules of the endoplasmic reticulum. ATL3 functions as a receptor for ER-phagy, promoting tubular ER degradation upon starvation. Mutations in this gene may be associated with hereditary sensory neuropathy type IF.

Storage

Storage:

Store at -80°C.

Storage Buffer:

PBS only, pH7.3

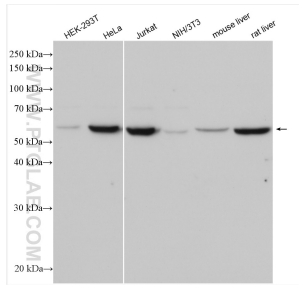
For technical support and original validation data for this product please contact:

T: 1 (888) 4PTGLAB (1-888-478-4522) (toll free in USA), or 1(312) 455-8498 (outside USA)

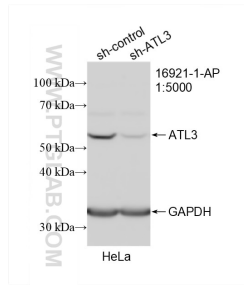
E: proteintech@ptglab.com
W: ptglab.com

This product is exclusively available under Proteintech Group brand and is not available to purchase from any other manufacturer.

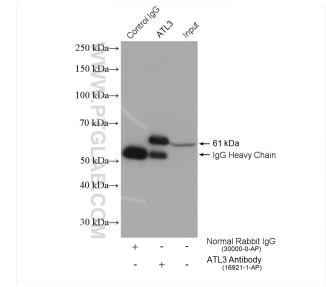
Selected Validation Data



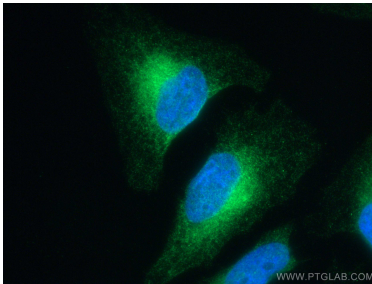
Various lysates were subjected to SDS PAGE followed by western blot with 16921-1-AP (ATL3 antibody) at dilution of 1:6000 incubated at room temperature for 1.5 hours. This data was developed using the same antibody clone with 16921-1-PBS in a different storage buffer formulation.



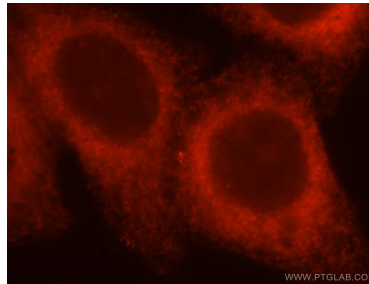
WB result of ATL3 antibody (16921-1-AP; 1:5000; incubated at room temperature for 1.5 hours) with sh-Control and sh-ATL3 transfected HeLa cells. This data was developed using the same antibody clone with 16921-1-PBS in a different storage buffer formulation.



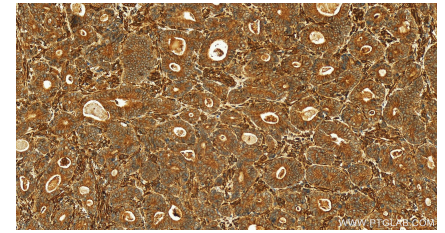
IP result of anti-ATL3 (IP:16921-1-AP, 4ug; Detection:16921-1-AP 1:5000) with HeLa cells lysate 1720 ug. This data was developed using the same antibody clone with 16921-1-PBS in a different storage buffer formulation.



Immunofluorescent analysis of (4% PFA) fixed HeLa cells using ATL3 antibody (16921-1-AP) at dilution of 1:200 and CoraLite®488-Conjugated AffiniPure Goat Anti-Rabbit IgG(H+L). This data was developed using the same antibody clone with 16921-1-PBS in a different storage buffer formulation.



Immunofluorescent analysis of HepG2 cells, using ATL3 antibody 16921-1-AP at 1:25 dilution and Rhodamine-labeled goat anti-rabbit IgG (red). This data was developed using the same antibody clone with 16921-1-PBS in a different storage buffer formulation.



Immunohistochemical analysis of paraffin-embedded human stomach cancer tissue slide using 16921-1-AP (ATL3 antibody) at dilution of 1:200 (under 20x lens). Heat mediated antigen retrieval with Tris-EDTA buffer (pH 9.0). This data was developed using the same antibody clone with 16921-1-PBS in a different storage buffer formulation.