

For Research Use Only

Calcyphosine Polyclonal antibody

Catalog Number: 16926-1-AP



Basic Information

| | | |
|--|--|--|
| Catalog Number: 16926-1-AP | GenBank Accession Number: BC080599 | Purification Method: Antigen affinity purification |
| Size: 150ul , Concentration: 500 µg/ml by Nanodrop and 260 µg/ml by Bradford method using BSA as the standard; | GeneID (NCBI): 828 | Recommended Dilutions: WB 1:500-1:1000 IHC 1:50-1:500 |
| Source: Rabbit | Full Name: calcyphosine | |
| Isotype: IgG | Calculated MW: 189 aa, 21 kDa | |
| Immunogen Catalog Number: AG10330 | Observed MW: 21 kDa | |

Applications

| | |
|---|---|
| Tested Applications: IHC, WB, ELISA | Positive Controls: |
| Species Specificity: human | WB : human colon tissue, human spleen tissue |
| Note-IHC: <i>suggested antigen retrieval with TE buffer pH 9.0; (*) Alternatively, antigen retrieval may be performed with citrate buffer pH 6.0</i> | IHC : human oesophagus cancer tissue, |

Background Information

calcyphosine is a calcium-binding protein, which may play a role in the regulation of ion transport. Calcyphosine (CAPS) was initially identified in the canine thyroid but has also been detected in humans and other mammals. CAPS synthesis is increased by thyroid-stimulating hormone and cAMP analogs that promote cell proliferation and maintain cell differentiation. Recently, CAPS was found to be involved in many kinds of tumor.

Storage

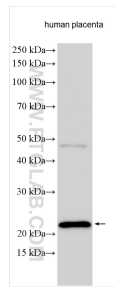
Storage:
Store at -20°C. Stable for one year after shipment.
Storage Buffer:
PBS with 0.02% sodium azide and 50% glycerol pH 7.3.
Aliquoting is unnecessary for -20°C storage

*** 20ul sizes contain 0.1% BSA

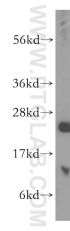
For technical support and original validation data for this product please contact:
T: 1 (888) 4PTGLAB (1-888-478-4522) (toll free in USA), or 1(312) 455-8498 (outside USA)
E: proteintech@ptglab.com
W: ptglab.com

This product is exclusively available under Proteintech Group brand and is not available to purchase from any other manufacturer.

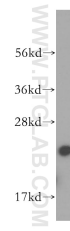
Selected Validation Data



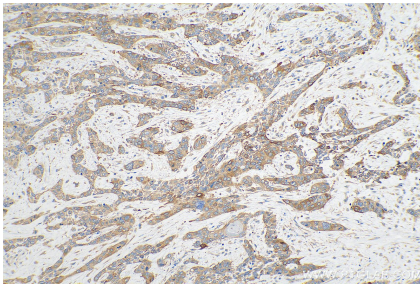
Human placenta tissue were subjected to SDS PAGE followed by western blot with 16926-1-AP (Calcyphosine antibody) at dilution of 1:4000 incubated at room temperature for 1.5 hours.



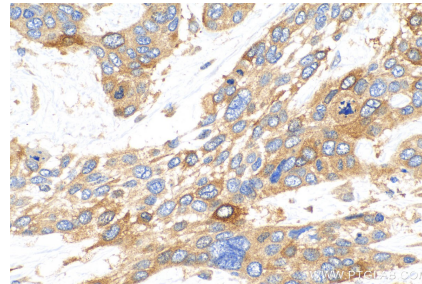
human spleen tissue were subjected to SDS PAGE followed by western blot with 16926-1-AP (Calcyphosine antibody) at dilution of 1:500 incubated at room temperature for 1.5 hours.



human colon tissue were subjected to SDS PAGE followed by western blot with 16926-1-AP (Calcyphosine antibody) at dilution of 1:500 incubated at room temperature for 1.5 hours.



Immunohistochemical analysis of paraffin-embedded human oesophagus cancer tissue slide using 16926-1-AP (Calcyphosine antibody) at dilution of 1:200 (under 10x lens). Heat mediated antigen retrieval with Tris-EDTA buffer (pH 9.0).



Immunohistochemical analysis of paraffin-embedded human oesophagus cancer tissue slide using 16926-1-AP (Calcyphosine antibody) at dilution of 1:200 (under 40x lens). Heat mediated antigen retrieval with Tris-EDTA buffer (pH 9.0).