

For Research Use Only

TBX2 Polyclonal antibody

Catalog Number: 16930-1-AP

Featured Product

1 Publications



Basic Information

Catalog Number: 16930-1-AP	GenBank Accession Number: BC052566	Purification Method: Antigen affinity purification
Size: 150ul , Concentration: 400 µg/ml by Nanodrop and 333 µg/ml by Bradford method using BSA as the standard;	GeneID (NCBI): 6909	Recommended Dilutions: WB 1:500-1:1000 IHC 1:20-1:200 IF 1:50-1:500
Source: Rabbit	Full Name: T-box 2	
Isotype: IgG	Calculated MW: 702 aa, 74 kDa	
Immunogen Catalog Number: AG10393	Observed MW: 74 kDa	

Applications

Tested Applications: IF, IHC, WB, ELISA	Positive Controls: WB : human placenta tissue, BxPC-3 cells IHC : human kidney tissue, IF : HeLa cells,
Cited Applications: WB	
Species Specificity: human	
Cited Species: human	

Note-IHC: suggested antigen retrieval with TE buffer pH 9.0; (*) Alternatively, antigen retrieval may be performed with citrate buffer pH 6.0

Background Information

Notable Publications

Author	Pubmed ID	Journal	Application
Bianca Del B Sahn	32195221	Front Chem	WB

Storage

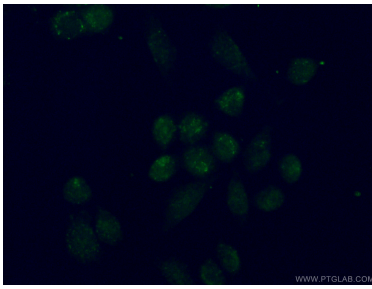
Storage:
Store at -20°C. Stable for one year after shipment.
Storage Buffer:
PBS with 0.02% sodium azide and 50% glycerol pH 7.3.
Aliquoting is unnecessary for -20°C storage

*** 20ul sizes contain 0.1% BSA

For technical support and original validation data for this product please contact:
T: 1 (888) 4PTGLAB (1-888-478-4522) (toll free in USA), or 1(312) 455-8498 (outside USA) E: proteintech@ptglab.com W: ptglab.com

This product is exclusively available under Proteintech Group brand and is not available to purchase from any other manufacturer.

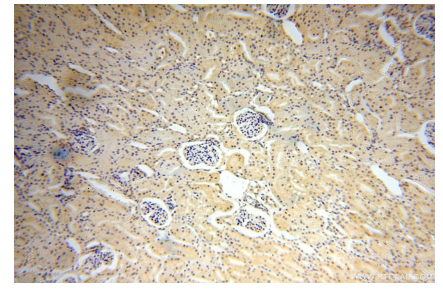
Selected Validation Data



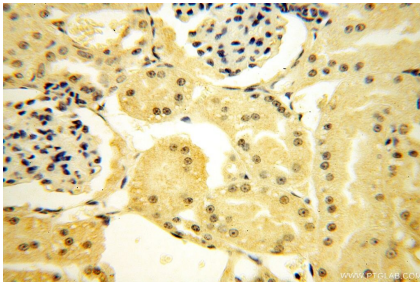
Immunofluorescent analysis of (4% PFA) fixed HeLa cells using 16930-1-AP (TBX2 antibody) at dilution of 1:50 and Alexa Fluor 488-conjugated AffiniPure Goat Anti-Rabbit IgG(H+L).



human placenta tissue were subjected to SDS PAGE followed by western blot with 16930-1-AP (TBX2 antibody) at dilution of 1:200 incubated at room temperature for 1.5 hours.



Immunohistochemical analysis of paraffin-embedded human kidney using 16930-1-AP (TBX2 antibody) at dilution of 1:100 (under 10x lens).



Immunohistochemical analysis of paraffin-embedded human kidney using 16930-1-AP (TBX2 antibody) at dilution of 1:100 (under 40x lens).