

For Research Use Only

SPATS2L Polyclonal antibody

Catalog Number: 16938-1-AP

Featured Product

4 Publications



Basic Information

Catalog Number: 16938-1-AP	GenBank Accession Number: BC018736	Purification Method: Antigen affinity purification
Size: 150ul , Concentration: 240 µg/ml by Nanodrop and 133 µg/ml by Bradford method using BSA as the standard;	GeneID (NCBI): 26010	Recommended Dilutions: WB 1:500-1:3000 IHC 1:20-1:200 IF 1:10-1:100
Source: Rabbit	Full Name: viral DNA polymerase-transactivated protein 6	
Isotype: IgG	Calculated MW: 488 aa, 54 kDa	
Immunogen Catalog Number: AG10438	Observed MW: 54-62 kDa	

Applications

Tested Applications:

IF, IHC, WB, ELISA

Cited Applications:

IF, IHC, WB

Species Specificity:

human

Cited Species:

human, mouse

Note-IHC: suggested antigen retrieval with TE buffer pH 9.0; (*) Alternatively, antigen retrieval may be performed with citrate buffer pH 6.0

Positive Controls:

WB : HepG2 cells, mouse kidney tissue

IHC : human kidney tissue, human heart tissue, human liver tissue, human lung tissue, human ovary tissue, human placenta tissue, human skin tissue, human spleen tissue, human testis tissue

IF : HepG2 cells,

Background Information

SPATS2L encodes spermatogenesis associated and serine-rich 2-like protein, also named DNAPT6 (DNA polymerase transactivated protein 6) in human (PMID:11230166). SPATS2L acts as an important regulator of β 2-adrenergic receptor down-regulation (PubMed: 25562107). MiR-1269a down-regulates the expression of SPATS2L and LRP6, thereby inhibiting the proliferation of liver cancer cells (PMID: 28081866, PMID:35252180). SPATS2L has several isoforms by alternative splicing.

Notable Publications

Author	Pubmed ID	Journal	Application
Yosuke Matsumoto	35896560	Sci Rep	IHC,WB
Zewei Tu	33634092	Front Cell Dev Biol	WB
Sefan Asamitsu	36827365	Sci Adv	IF

Storage

Storage:

Store at -20°C. Stable for one year after shipment.

Storage Buffer:

PBS with 0.02% sodium azide and 50% glycerol pH 7.3.

Aliquoting is unnecessary for -20°C storage

*** 20ul sizes contain 0.1% BSA

For technical support and original validation data for this product please contact:

T: 1 (888) 4PTGLAB (1-888-478-4522) (toll free in USA), or 1(312) 455-8498 (outside USA)

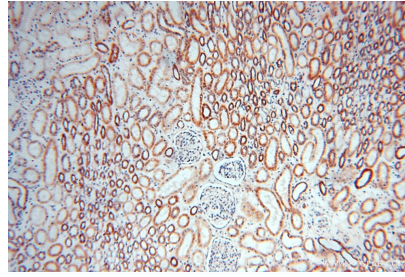
E: proteintech@ptglab.com
W: ptglab.com

This product is exclusively available under Proteintech Group brand and is not available to purchase from any other manufacturer.

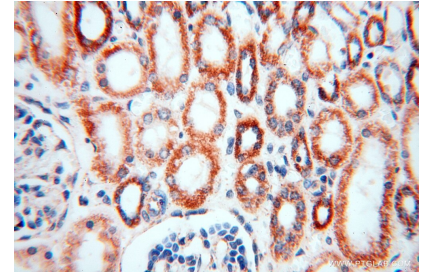
Selected Validation Data



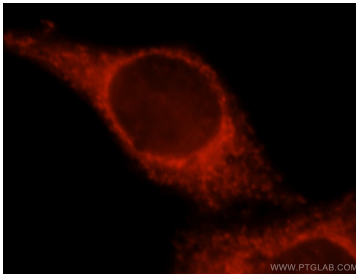
HepG2 cells were subjected to SDS PAGE followed by western blot with 16938-1-AP (SPATS2L antibody) at dilution of 1:600 incubated at room temperature for 1.5 hours.



Immunohistochemical analysis of paraffin-embedded human kidney using 16938-1-AP (SPATS2L antibody) at dilution of 1:100 (under 10x lens).



Immunohistochemical analysis of paraffin-embedded human kidney using 16938-1-AP (SPATS2L antibody) at dilution of 1:100 (under 40x lens).



Immunofluorescent analysis of HepG2 cells, using LOC26010 antibody 16938-1-AP at 1:25 dilution and Rhodamine-labeled goat anti-rabbit IgG (red).