

For Research Use Only

GAPVD1 Polyclonal antibody

Catalog Number: 16940-1-AP



Basic Information

Catalog Number: 16940-1-AP	GenBank Accession Number: BC021119	Purification Method: Antigen affinity purification
Size: 150ul , Concentration: 300 ug/ml by Nanodrop and 287 ug/ml by Bradford method using BSA as the standard;	GeneID (NCBI): 26130	Recommended Dilutions: WB 1:500-1:1000 IHC 1:250-1:1000 IF/ICC 1:200-1:800
Source: Rabbit	UNIPROT ID: Q14C86	
Isotype: IgG	Full Name: GTPase activating protein and VPS9 domains 1	
Immunogen Catalog Number: AG10492	Calculated MW: 1478 aa, 165 kDa	
	Observed MW: 180-200 kDa	

Applications

Tested Applications: WB, IHC, IF/ICC, ELISA	Positive Controls:
Species Specificity: human, mouse, rat	WB : mouse heart tissue, rat heart tissue
Note-IHC: suggested antigen retrieval with TE buffer pH 9.0; (*) Alternatively, antigen retrieval may be performed with citrate buffer pH 6.0	IHC : human placenta tissue,
	IF/ICC : A431 cells,

Background Information

GTPase activating protein and VPS9 domains 1(GAPVD1) is a multifunctional protein involved in cellular processes such as endocytosis, insulin receptor internalization, and GLUT4 trafficking. Its function is critical in maintaining cellular homeostasis and it interacts with various proteins, including those involved in endocytosis and circadian rhythm regulation.

Storage

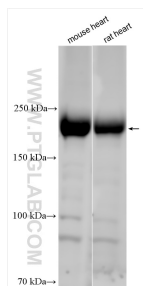
Storage:
Store at -20°C. Stable for one year after shipment.
Storage Buffer:
PBS with 0.02% sodium azide and 50% glycerol pH 7.3.
Aliquoting is unnecessary for -20°C storage

*** 20ul sizes contain 0.1% BSA

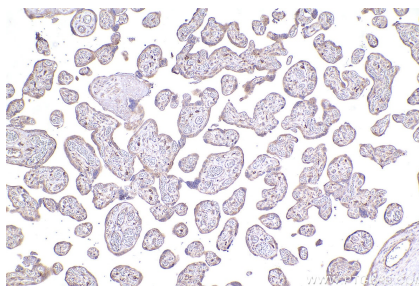
For technical support and original validation data for this product please contact:
T: 1 (888) 4PTGLAB (1-888-478-4522) (toll free in USA), or 1(312) 455-8498 (outside USA)
E: proteintech@ptglab.com
W: ptglab.com

This product is exclusively available under Proteintech Group brand and is not available to purchase from any other manufacturer.

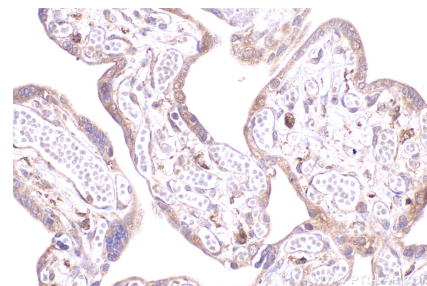
Selected Validation Data



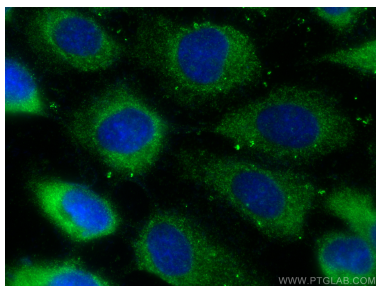
Various lysates were subjected to SDS PAGE followed by western blot with 16940-1-AP (GAPVD1 antibody) at dilution of 1:500 incubated at room temperature for 1.5 hours.



Immunohistochemical analysis of paraffin-embedded human placenta tissue slide using 16940-1-AP (GAPVD1 antibody) at dilution of 1:500 (under 10x lens). Heat mediated antigen retrieval with Tris-EDTA buffer (pH 9.0).



Immunohistochemical analysis of paraffin-embedded human placenta tissue slide using 16940-1-AP (GAPVD1 antibody) at dilution of 1:500 (under 40x lens). Heat mediated antigen retrieval with Tris-EDTA buffer (pH 9.0).



Immunofluorescent analysis of (-20°C Methanol) fixed A431 cells using GAPVD1 antibody (16940-1-AP) at dilution of 1:400 and CoraLite®488-Conjugated AffiniPure Goat Anti-Rabbit IgG(H+L) (SA00013-2).