

For Research Use Only

RPS21 Polyclonal antibody

Catalog Number: 16946-1-AP

Featured Product

4 Publications



Basic Information

Catalog Number:

16946-1-AP

Size:

150ul, Concentration: 550 ug/ml by Nanodrop;

Source:

Rabbit

Isotype:

IgG

Immunogen Catalog Number:

AG10557

GenBank Accession Number:

BC018140

GeneID (NCBI):

6227

UNIPROT ID:

P63220

Full Name:

ribosomal protein S21

Calculated MW:

81 aa, 9 kDa

Observed MW:

9 kDa

Purification Method:

Antigen affinity purification

Recommended Dilutions:

WB 1:1000-1:6000

IHC 1:50-1:500

IF/ICC 1:200-1:800

Applications

Tested Applications:

WB, IHC, IF/ICC, ELISA

Cited Applications:

WB, IHC

Species Specificity:

human, mouse, rat

Cited Species:

human, mouse

Note-IHC: suggested antigen retrieval with TE buffer pH 9.0; (*) Alternatively, antigen retrieval may be performed with citrate buffer pH 6.0

Positive Controls:

WB : HeLa cells, HepG2 cells, mouse liver tissue, SGC-7901 cells, rat liver tissue

IHC : human liver cancer tissue,

IF/ICC : HepG2 cells,

Background Information

Ribosomes, the organelles that catalyze protein synthesis, consist of a small 40S subunit and a large 60S subunit. Together these subunits are composed of 4 RNA species and approximately 80 structurally distinct proteins. This gene encodes a ribosomal protein that is a component of the 40S subunit.

Notable Publications

Author	Pubmed ID	Journal	Application
Shutong Fan	30405806	Oncol Lett	IHC
Natsuki Nakanishi	36194357	Reprod Sci	IHC
Zumu Liang	31089825	Med Oncol	WB,IHC

Storage

Storage:

Store at -20°C. Stable for one year after shipment.

Storage Buffer:

PBS with 0.02% sodium azide and 50% glycerol pH 7.3.

Aliquoting is unnecessary for -20°C storage

*** 20ul sizes contain 0.1% BSA

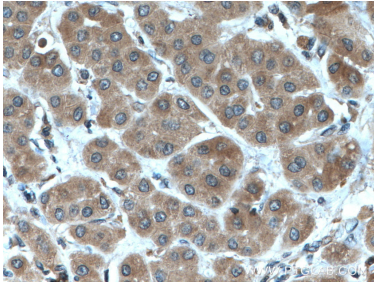
For technical support and original validation data for this product please contact:

T: 1 (888) 4PTGLAB (1-888-478-4522) (toll free in USA), or 1(312) 455-8498 (outside USA)

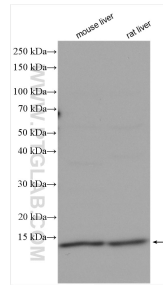
E: proteintech@ptglab.com
W: ptglab.com

This product is exclusively available under Proteintech Group brand and is not available to purchase from any other manufacturer.

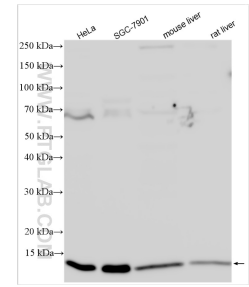
Selected Validation Data



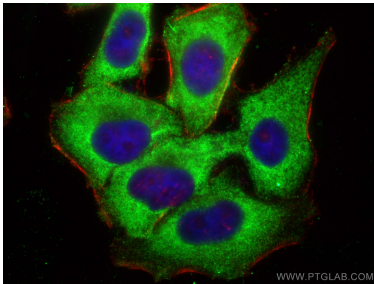
Immunohistochemical analysis of paraffin-embedded human liver cancer tissue slide using 16946-1-AP (RPS21 antibody) at dilution of 1:200 (under 40x lens. Heat mediated antigen retrieval with Tris-EDTA buffer (pH 9.0)).



Various lysates were subjected to SDS PAGE followed by western blot with 16946-1-AP (RPS21 antibody) at dilution of 1:800 incubated at room temperature for 1.5 hours.



Various lysates were subjected to SDS PAGE followed by western blot with 16946-1-AP (RPS21 antibody) at dilution of 1:3000 incubated at room temperature for 1.5 hours.



Immunofluorescent analysis of (-20°C Ethanol) fixed HepG2 cells using RPS21 antibody (16946-1-AP) at dilution of 1:400 and CoraLite®488-Conjugated Goat Anti-Rabbit IgG(H+L) (SA00013-2), CL594-phalloidin (red).