

For Research Use Only

CPLX3 Polyclonal antibody, PBS Only

Catalog Number: 16949-1-PBS



Basic Information

Catalog Number:

16949-1-PBS

Size:

100ug, Concentration: 1 mg/ml by Nanodrop;

Source:

Rabbit

Isotype:

IgG

Immunogen Catalog Number:

AG10571

GenBank Accession Number:

BC018026

GeneID (NCBI):

594855

UNIPROT ID:

Q8WVHO

Full Name:

complexin 3

Calculated MW:

158 aa, 18 kDa

Observed MW:

20-23 kDa

Purification Method:

Antigen affinity purification

Applications

Tested Applications:

WB, IF-P, IP, Indirect ELISA

Species Specificity:

human, mouse, rat

Background Information

CPLX3, also named as Complexin-3, is 158 amino acid protein, which belongs to the complexin/synaphin family. CPLX3 localizes in the membrane and binds to the SNARE core complex containing SNAP25, VAMP2 and STX1A. CPLX3 positively regulates a late step in synaptic vesicle exocytosis.

Storage

Storage:

Store at -80°C.

Storage Buffer:

PBS only, pH7.3

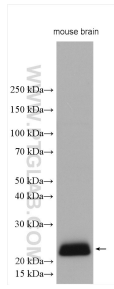
For technical support and original validation data for this product please contact:

T: 1 (888) 4PTGLAB (1-888-478-4522) (toll free in USA), or 1(312) 455-8498 (outside USA)

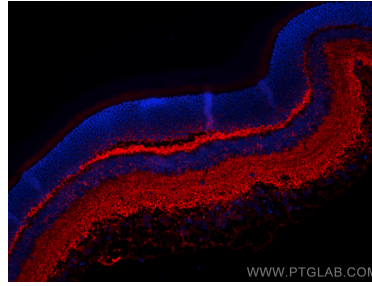
E: proteintech@ptglab.com
W: ptglab.com

This product is exclusively available under Proteintech Group brand and is not available to purchase from any other manufacturer.

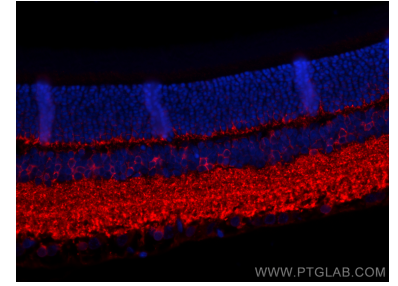
Selected Validation Data



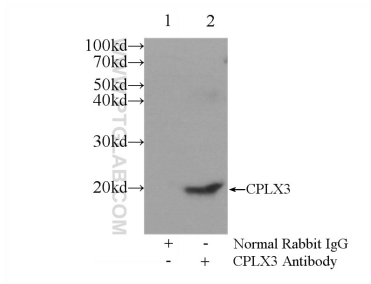
mouse brain tissue were subjected to SDS PAGE followed by western blot with 16949-1-AP (CPLX3 antibody) at dilution of 1:2000 incubated at room temperature for 1.5 hours. This data was developed using the same antibody clone with 16949-1-PBS in a different storage buffer formulation.



Immunofluorescent analysis of (-20°C Acetone) fixed paraffin-embedded rat eye tissue using CPLX3 antibody (16949-1-AP) at dilution of 1:200 and CoraLite® 594-Conjugated Goat Anti-Rabbit IgG(H+L) (SA00013-4). Heat mediated antigen retrieval with Tris-EDTA buffer (pH 9.0). This data was developed using the same antibody clone with 16949-1-PBS in a different storage buffer formulation.



Immunofluorescent analysis of (-20°C Acetone) fixed paraffin-embedded rat eye tissue using CPLX3 antibody (16949-1-AP) at dilution of 1:200 and CoraLite® 594-Conjugated Goat Anti-Rabbit IgG(H+L) (SA00013-4). Heat mediated antigen retrieval with Tris-EDTA buffer (pH 9.0). This data was developed using the same antibody clone with 16949-1-PBS in a different storage buffer formulation.



IP result of anti-CPLX3 (IP:16949-1-AP, 3ug; Detection:16949-1-AP 1:300) with mouse brain tissue lysate 6000ug. This data was developed using the same antibody clone with 16949-1-PBS in a different storage buffer formulation.