

For Research Use Only

KLHL3 Polyclonal antibody

Catalog Number: 16951-1-AP

Featured Product

17 Publications



Basic Information

Catalog Number:

16951-1-AP

Size:

150ul, Concentration: 900 ug/ml by Nanodrop and 400 ug/ml by Bradford method using BSA as the standard;

Source:

Rabbit

Isotype:

IgG

Immunogen Catalog Number:

AG10580

GenBank Accession Number:

BC034035

GeneID (NCBI):

26249

UNIPROT ID:

Q9UH77

Full Name:

kelch-like 3 (Drosophila)

Calculated MW:

65 kDa

Observed MW:

65 kDa

Purification Method:

Antigen affinity purification

Recommended Dilutions:

WB 1:500-1:1000

IP 0.5-4.0 ug for 1.0-3.0 mg of total protein lysate

IHC 1:500-1:2000

Applications

Tested Applications:

WB, IHC, IP, ELISA

Cited Applications:

WB, IHC, IF, IP

Species Specificity:

human, mouse, rat

Cited Species:

human, mouse

Note-IHC: suggested antigen retrieval with TE buffer pH 9.0; (*) Alternatively, antigen retrieval may be performed with citrate buffer pH 6.0

Positive Controls:

WB: HepG2 cells, mouse liver tissue, Jurkat cells, rat liver tissue, human liver tissue, mouse thymus tissue, HL-60 cells, mouse pancreas tissue

IP: HepG2 cells,

IHC: human tonsillitis tissue, human liver tissue

Notable Publications

Author	Pubmed ID	Journal	Application
Yutaro Mori	26349538	Biochem J	WB
Ryan J Cornelius	30301860	J Am Soc Nephrol	WB
Yuki Yoshizaki	26435498	Biochem Biophys Res Commun	WB

Storage

Storage:

Store at -20°C. Stable for one year after shipment.

Storage Buffer:

PBS with 0.02% sodium azide and 50% glycerol pH 7.3.

Aliquoting is unnecessary for -20°C storage

*** 20ul sizes contain 0.1% BSA

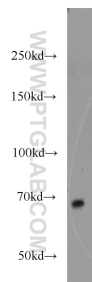
For technical support and original validation data for this product please contact:

T: 1 (888) 4PTGLAB (1-888-478-4522) (toll free in USA), or 1(312) 455-8498 (outside USA)

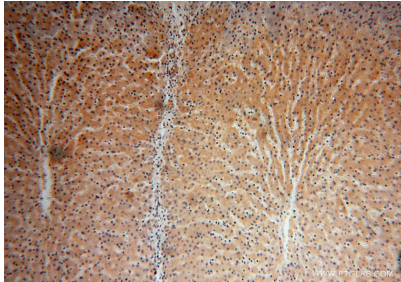
E: proteintech@ptglab.com
W: ptglab.com

This product is exclusively available under Proteintech Group brand and is not available to purchase from any other manufacturer.

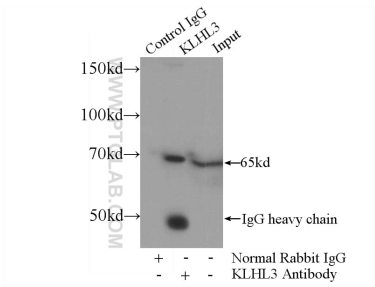
Selected Validation Data



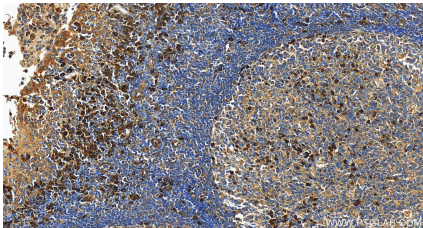
HepG2 cells were subjected to SDS PAGE followed by western blot with 16951-1-AP (KLHL3 antibody) at dilution of 1:800 incubated at room temperature for 1.5 hours.



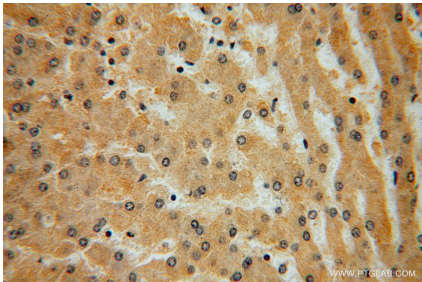
Immunohistochemical analysis of paraffin-embedded human liver using 16951-1-AP (KLHL3 antibody) at dilution of 1:100 (under 10x lens).



IP result of anti-KLHL3 (IP:16951-1-AP, 4ug; Detection:16951-1-AP 1:700) with HepG2 cells lysate 2800ug.



Immunohistochemical analysis of paraffin-embedded human tonsillitis tissue slide using 16951-1-AP (KLHL3 antibody) at dilution of 1:1000 (under 20x lens). Heat mediated antigen retrieval with Tris-EDTA buffer (pH 9.0).



Immunohistochemical analysis of paraffin-embedded human liver using 16951-1-AP (KLHL3 antibody) at dilution of 1:100 (under 40x lens).