

For Research Use Only

CA2 Polyclonal antibody, PBS Only

Catalog Number: 16961-1-PBS **1 Publications**



Basic Information

Catalog Number: 16961-1-PBS	GenBank Accession Number: BC011949	Purification Method: Antigen affinity purification
Size: 100ug, Concentration: 1 mg/ml by Nanodrop;	GeneID (NCBI): 760	
Source: Rabbit	UNIPROT ID: P00918	
Isotype: IgG	Full Name: carbonic anhydrase II	
Immunogen Catalog Number: AG10680	Calculated MW: 260 aa, 29 kDa	
	Observed MW: 29 kDa	

Applications

Tested Applications:
WB, IP, Indirect ELISA

Cited Applications:
WB

Species Specificity:
human, mouse, rat

Cited Species:
human

Background Information

CA2(carbonic anhydrase II) is also called Car2, CA-II, and CAII and belongs to the alpha-carbonic anhydrase family. It reversibly hydrates CO₂ in cellular ion transport and homeostasis. CA2 is essential for bone resorption and osteoclast differentiation. It regulates SLC9A1 activity via a phosphorylation-regulated CAII binding site in SLC9A1 tail(PMID:16475831). It also may be involved in brain development (PMID:16825953). Defects in CA2 cause osteopetrosis autosomal recessive type 3 (OPTB3).

Notable Publications

Author	Pubmed ID	Journal	Application
Lavanya Choppavarapu	40112000	Cell Rep	WB

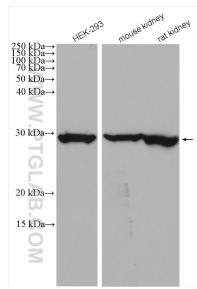
Storage

Storage:
Store at -80°C.
Storage Buffer:
PBS only, pH7.3

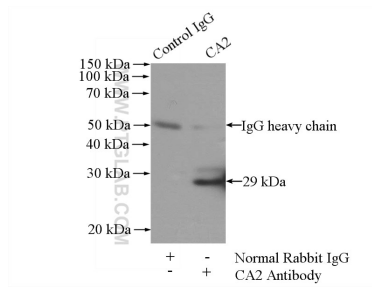
For technical support and original validation data for this product please contact:
T: 1 (888) 4PTGLAB (1-888-478-4522) (toll free in USA), or 1(312) 455-8498 (outside USA) E: proteintech@ptglab.com
W: ptglab.com

This product is exclusively available under Proteintech Group brand and is not available to purchase from any other manufacturer.

Selected Validation Data



Various lysates were subjected to SDS PAGE followed by western blot with 16961-1-AP (CA2 antibody) at dilution of 1:1000 incubated at room temperature for 1.5 hours. This data was developed using the same antibody clone with 16961-1-PBS in a different storage buffer formulation.



IP result of anti-CA2 (IP:16961-1-AP, 4ug; Detection:16961-1-AP 1:500) with mouse kidney tissue lysate 4000ug. This data was developed using the same antibody clone with 16961-1-PBS in a different storage buffer formulation.