

For Research Use Only

NVL Polyclonal antibody

Catalog Number: 16970-1-AP

3 Publications



Basic Information

Catalog Number:

16970-1-AP

Size:

150ul, Concentration: 600 ug/ml by Nanodrop and 333 ug/ml by Bradford method using BSA as the standard;

Source:

Rabbit

Isotype:

IgG

Immunogen Catalog Number:

AG9205

GenBank Accession Number:

BC012105

GeneID (NCBI):

4931

UNIPROT ID:

O15381

Full Name:

nuclear VCP-like

Calculated MW:

856aa, 95 kDa; 659aa, 73 kDa

Observed MW:

95 kDa

Purification Method:

Antigen affinity purification

Recommended Dilutions:

WB 1:1000-1:6000

IF/ICC 1:10-1:100

Applications

Tested Applications:

WB, IF/ICC, ELISA

Cited Applications:

WB, IF

Species Specificity:

human, mouse, rat

Cited Species:

human

Positive Controls:

WB : mouse thymus tissue, mouse lung tissue, HeLa cells, mouse kidney tissue, rat thymus tissue

IF/ICC : HepG2 cells,

Background Information

NVL(nuclear VCP-like) belongs to the AAA ATPase family and may facilitate the dissociation and recycling of nucleolin, thereby promoting efficient ribosome biogenesis. It acts as an ATP-dependent zinc metalloproteinase. This protein has 5 isoforms produced by alternative splicing.

Notable Publications

Author	Pubmed ID	Journal	Application
Heeseon An	32612236	Nature	WB
Arthur Louche	36609656	Nat Commun	WB,IF
Yun Chawon C	19015314	J Cell Biol	IF

Storage

Storage:

Store at -20°C. Stable for one year after shipment.

Storage Buffer:

PBS with 0.02% sodium azide and 50% glycerol pH 7.3.

Aliquoting is unnecessary for -20°C storage

*** 20ul sizes contain 0.1% BSA

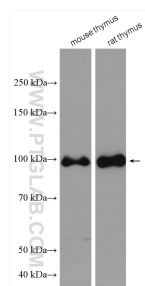
For technical support and original validation data for this product please contact:

T: 1 (888) 4PTGLAB (1-888-478-4522) (toll free in USA), or 1(312) 455-8498 (outside USA)

E: proteintech@ptglab.com
W: ptglab.com

This product is exclusively available under Proteintech Group brand and is not available to purchase from any other manufacturer.

Selected Validation Data



Various lysates were subjected to SDS PAGE followed by western blot with 16970-1-AP (NVL antibody) at dilution of 1:3000 incubated at room temperature for 1.5 hours.



Immunofluorescent analysis of HepG2 cells using 16970-1-AP (NVL antibody) at dilution of 1:25 and Rhodamine-Goat anti-Rabbit IgG.