

For Research Use Only

# Syntabulin Polyclonal antibody

Catalog Number: 16972-1-AP

3 Publications



## Basic Information

<b>Catalog Number:</b> 16972-1-AP	<b>GenBank Accession Number:</b> BC012082	<b>Purification Method:</b> Antigen affinity purification
<b>Size:</b> 150ul , Concentration: 500 µg/ml by Nanodrop and 133 µg/ml by Bradford method using BSA as the standard;	<b>GeneID (NCBI):</b> 55638	<b>Recommended Dilutions:</b> WB 1:500-1:2000 IF 1:50-1:500
<b>Source:</b> Rabbit	<b>Full Name:</b> Golgi-localized protein	
<b>Isotype:</b> IgG	<b>Calculated MW:</b> 662 aa, 72 kDa	
<b>Immunogen Catalog Number:</b> AG9344	<b>Observed MW:</b> 90 kDa	

## Applications

<b>Tested Applications:</b> IF, WB, ELISA	<b>Positive Controls:</b>
<b>Cited Applications:</b> IF, WB	<b>WB :</b> HeLa cells, MCF-7 cells
<b>Species Specificity:</b> human, mouse, rat	<b>IF :</b> HeLa cells, rat brain tissue
<b>Cited Species:</b> human, rat, mouse	

## Background Information

### Notable Publications

Author	Pubmed ID	Journal	Application
Qi Wang	30923004	Neurobiol Dis	WB
Saravanan Gunaseelan	33395696	Hum Mol Genet	WB
Pingyang Ke	37349285	Cell Death Discov	WB, IF

## Storage

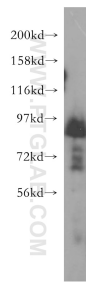
**Storage:**  
Store at -20°C. Stable for one year after shipment.  
**Storage Buffer:**  
PBS with 0.02% sodium azide and 50% glycerol pH 7.3.  
**Aliquoting is unnecessary for -20°C storage**

\*\*\* 20ul sizes contain 0.1% BSA

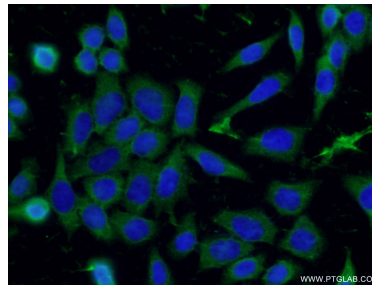
For technical support and original validation data for this product please contact:  
T: 1 (888) 4PTGLAB (1-888-478-4522) (toll free in USA), or 1(312) 455-8498 (outside USA)  
E: [proteintech@ptglab.com](mailto:proteintech@ptglab.com)  
W: [ptglab.com](http://ptglab.com)

This product is exclusively available under Proteintech Group brand and is not available to purchase from any other manufacturer.

## Selected Validation Data



HeLa cells were subjected to SDS PAGE followed by western blot with 16972-1-AP (Syntabulin antibody) at dilution of 1:500 incubated at room temperature for 1.5 hours.



Immunofluorescent analysis of (-20°C Ethanol) fixed HeLa cells using 16972-1-AP (Syntabulin antibody) at dilution of 1:50 and Alexa Fluor 488-conjugated AffiniPure Goat Anti-Rabbit IgG(H+L).