

For Research Use Only

Syntabulin Polyclonal antibody, PBS Only

Catalog Number: 16972-1-PBS

Featured Product



Basic Information

Catalog Number:

16972-1-PBS

Size:

100ug, Concentration: 1 mg/ml by Nanodrop;

Source:

Rabbit

Isotype:

IgG

Immunogen Catalog Number:

AG9344

GenBank Accession Number:

BC012082

GeneID (NCBI):

55638

UNIPROT ID:

Q9NX95

Full Name:

Golgi-localized protein

Calculated MW:

662 aa, 72 kDa

Observed MW:

90 kDa

Purification Method:

Antigen affinity purification

Applications

Tested Applications:

WB, IF/ICC, IF-P, Indirect ELISA

Species Specificity:

human, mouse, rat

Storage

Storage:

Store at -80°C.

Storage Buffer:

PBS only, pH7.3

For technical support and original validation data for this product please contact:

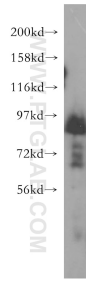
T: 1 (888) 4PTGLAB (1-888-478-4522) (toll free in USA), or 1(312) 455-8498 (outside USA)

E: proteintech@ptglab.com

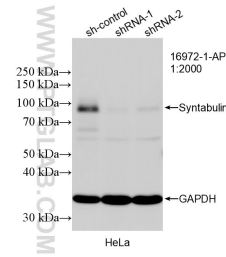
W: ptglab.com

This product is exclusively available under Proteintech Group brand and is not available to purchase from any other manufacturer.

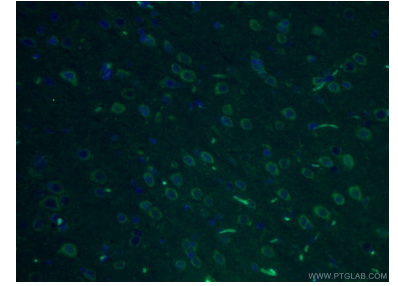
Selected Validation Data



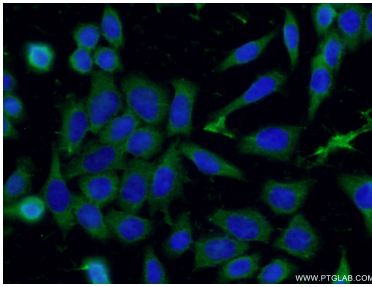
HeLa cells were subjected to SDS PAGE followed by western blot with 16972-1-AP (Syntabulin antibody) at dilution of 1:500 incubated at room temperature for 1.5 hours. This data was developed using the same antibody clone with 16972-1-PBS in a different storage buffer formulation.



WB result of Syntabulin antibody (16972-1-AP; 1:2000; incubated at room temperature for 1.5 hours) with sh-Control and sh-Syntabulin transfected HeLa cells. This data was developed using the same antibody clone with 16972-1-PBS in a different storage buffer formulation.



Immunofluorescent analysis of (4% PFA) fixed rat brain tissue using 16972-1-AP (Syntabulin antibody) at dilution of 1:100 and CoraLite488-Conjugated AffiniPure Goat Anti-Rabbit IgG(H+L). This data was developed using the same antibody clone with 16972-1-PBS in a different storage buffer formulation.



Immunofluorescent analysis of (-20°C Ethanol) fixed HeLa cells using 16972-1-AP (Syntabulin antibody) at dilution of 1:50 and Alexa Fluor 488-conjugated AffiniPure Goat Anti-Rabbit IgG(H+L). This data was developed using the same antibody clone with 16972-1-PBS in a different storage buffer formulation.