

For Research Use Only

SGOL1 Polyclonal antibody

Catalog Number: 16977-1-AP

Featured Product

5 Publications



Basic Information

Catalog Number:

16977-1-AP

Size:

150ul, Concentration: 240 µg/ml by Nanodrop and 133 µg/ml by Bradford method using BSA as the standard;

Source:

Rabbit

Isotype:

IgG

Immunogen Catalog Number:

AG9700

GenBank Accession Number:

BC017867

GeneID (NCBI):

151648

UNIPROT ID:

Q5FBB7

Full Name:

shugoshin-like 1 (S. pombe)

Calculated MW:

561aa, 64 kDa; 292aa, 34 kDa

Observed MW:

64 kDa

Purification Method:

Antigen affinity purification

Recommended Dilutions:

WB 1:500-1:1000

Applications

Tested Applications:

WB, ELISA

Cited Applications:

WB, IF, IHC

Species Specificity:

human, mouse, rat

Cited Species:

human, mouse

Positive Controls:

WB : HeLa cells, PC-3 cells, NIH/3T3 cells, mouse heart tissue, rat heart tissue

Background Information

SGOL1 (Shugoshin 1), a centromeric protein, plays an important role in mitosis (PMID: 23102702).

Notable Publications

Author	Pubmed ID	Journal	Application
Xiaobin Fei	36439418	Front Oncol	WB
Yixiao Yuan	35592680	Front Oncol	IHC
Chinthalapally V Rao	25773652	Mol Carcinog	IHC

Storage

Storage:

Store at -20°C. Stable for one year after shipment.

Storage Buffer:

PBS with 0.02% sodium azide and 50% glycerol pH 7.3.

Aliquoting is unnecessary for -20°C storage

*** 20ul sizes contain 0.1% BSA

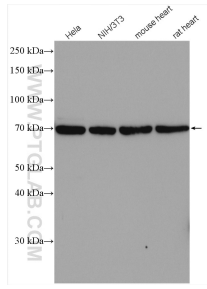
For technical support and original validation data for this product please contact:

T: 1 (888) 4PTGLAB (1-888-478-4522) (toll free in USA), or 1(312) 455-8498 (outside USA)

E: proteintech@ptglab.com
W: ptglab.com

This product is exclusively available under Proteintech Group brand and is not available to purchase from any other manufacturer.

Selected Validation Data



Various lysates were subjected to SDS PAGE followed by western blot with 16977-1-AP (SGOL1 antibody) at dilution of 1:600 incubated at room temperature for 1.5 hours.