

For Research Use Only

# MRPS15 Polyclonal antibody

Catalog Number: 17006-1-AP

13 Publications



## Basic Information

### Catalog Number:

17006-1-AP

### Size:

150ul, Concentration: 550 ug/ml by Nanodrop and 300 ug/ml by Bradford method using BSA as the standard;

### Source:

Rabbit

### Isotype:

IgG

### Immunogen Catalog Number:

AG10702

### GenBank Accession Number:

BC031336

### GeneID (NCBI):

64960

### UNIPROT ID:

P82914

### Full Name:

mitochondrial ribosomal protein S15

### Calculated MW:

257 aa, 30 kDa

### Observed MW:

25-30 kDa

### Purification Method:

Antigen affinity purification

### Recommended Dilutions:

WB 1:500-1:2000

IP 0.5-4.0 ug for 1.0-3.0 mg of total protein lysate

IHC 1:20-1:200

IF/ICC 1:200-1:800

## Applications

### Tested Applications:

WB, IHC, IF/ICC, IP, ELISA

### Cited Applications:

WB

### Species Specificity:

human, mouse, rat

### Cited Species:

human, mouse

### Positive Controls:

WB : HeLa cells, mouse liver tissue, MCF-7 cells, Raji cells

IP : mouse brain tissue,

IHC : human spleen tissue,

IF/ICC : HeLa cells,

**Note-IHC: suggested antigen retrieval with TE buffer pH 9.0; (\*) Alternatively, antigen retrieval may be performed with citrate buffer pH 6.0**

## Background Information

MRPS15, also named as RPMS15 or DC37, is a 257 amino acid protein, which belongs to the ribosomal protein S15P family. MRPS15 localizes in the Mitochondrion and is a component of the mitochondrial ribosome small subunit (28S) which comprises a 12S rRNA and about 30 distinct proteins. MRPS15 is involved into the mitochondrial proteins biosynthesis and ribosomal biogenesis.

## Notable Publications

Author	Pubmed ID	Journal	Application
Ying Shu	36314841	EMBO J	WB
Luis Daniel Cruz-Zaragoza	34672953	Cell	WB
Ricarda Richter-Dennerlein	27693358	Cell	WB

## Storage

### Storage:

Store at -20°C. Stable for one year after shipment.

### Storage Buffer:

PBS with 0.02% sodium azide and 50% glycerol pH 7.3.

Aliquoting is unnecessary for -20°C storage

\*\*\* 20ul sizes contain 0.1% BSA

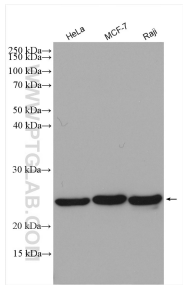
For technical support and original validation data for this product please contact:

T: 1 (888) 4PTGLAB (1-888-478-4522) (toll free in USA), or 1(312) 455-8498 (outside USA)

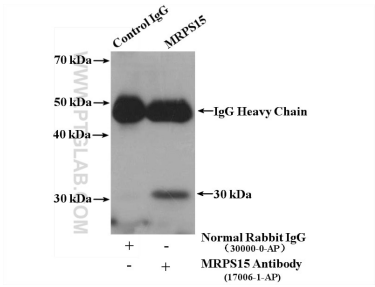
E: [proteintech@ptglab.com](mailto:proteintech@ptglab.com)  
W: [ptglab.com](http://ptglab.com)

This product is exclusively available under Proteintech Group brand and is not available to purchase from any other manufacturer.

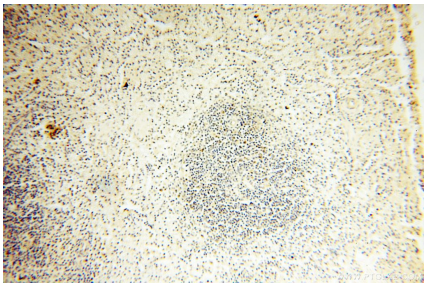
Selected Validation Data



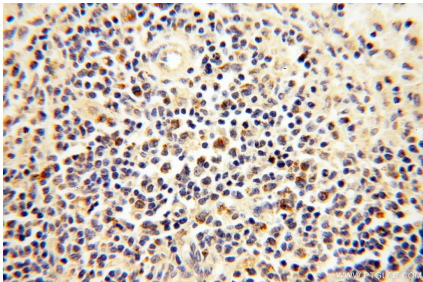
Various lysates were subjected to SDS PAGE followed by western blot with 17006-1-AP (MRPS15 antibody) at dilution of 1:1000 incubated at room temperature for 1.5 hours.



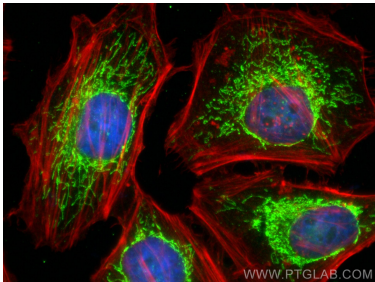
IP result of anti-MRPS15 (IP:17006-1-AP, 4ug; Detection:17006-1-AP 1:300) with mouse brain tissue lysate 3200 ug.



Immunohistochemical analysis of paraffin-embedded human spleen using 17006-1-AP (MRPS15 antibody) at dilution of 1:100 (under 10x lens).



Immunohistochemical analysis of paraffin-embedded human spleen using 17006-1-AP (MRPS15 antibody) at dilution of 1:100 (under 40x lens).



Immunofluorescent analysis of (4% PFA) fixed HeLa cells using MRPS15 antibody (17006-1-AP) at dilution of 1:400 and CoraLite®488-Conjugated Goat Anti-Rabbit IgG(H+L) (SA00013-2), CL594-phalloidin (red).