

For Research Use Only

# RECQL4 Polyclonal antibody

Catalog Number: 17008-1-AP

Featured Product

8 Publications



## Basic Information

### Catalog Number:

17008-1-AP

### Size:

150ul, Concentration: 450 ug/ml by Nanodrop and 233 ug/ml by Bradford method using BSA as the standard;

### Source:

Rabbit

### Isotype:

IgG

### Immunogen Catalog Number:

AG10707

### GenBank Accession Number:

BC013277

### GeneID (NCBI):

9401

### UNIPROT ID:

O94761

### Full Name:

RecQ protein-like 4

### Calculated MW:

1208 aa, 133 kDa

### Observed MW:

145-150 kDa

### Purification Method:

Antigen affinity purification

### Recommended Dilutions:

WB 1:1000-1:5000

IP 0.5-4.0 ug for 1.0-3.0 mg of total protein lysate

IHC 1:50-1:500

IF-P 1:50-1:500

IF/ICC 1:200-1:800

## Applications

### Tested Applications:

WB, IHC, IF/ICC, IF-P, IP, ELISA

### Cited Applications:

WB, IHC, IF, IP

### Species Specificity:

human

### Cited Species:

human, mouse

### Positive Controls:

WB: HeLa cells, HepG2 cells

IP: HeLa cells,

IHC: human gliomas tissue, human kidney tissue

IF-P: Customer Sample customer,

IF/ICC: HeLa cells,

**Note-IHC: suggested antigen retrieval with TE buffer pH 9.0; (\*) Alternatively, antigen retrieval may be performed with citrate buffer pH 6.0**

## Background Information

RECQ protein-like 4 (RECQL4), which has helicase domains contain 7 consensus motifs in the middle, is a gene responsible for Werner syndrome and Bloom syndrome. It forms a stable complex with UBR1 and UBR2, which has a DNA-stimulated ATPase activity. RECQL4 may involve in repairment of DNA damage by interaction with APE1 and FEN1, key participants in base excision repair. This is a rabbit polyclonal antibody raised against part of C-terminal of RECQL4 of human origin. The calculated molecular weight of RECQL4 is 133 kDa, but the modified RECQL4 protein is about 145-150 kDa.

## Notable Publications

Author	Pubmed ID	Journal	Application
Jiewei Wang	34822842	J Biol Chem	WB
Sebastian Veith	31296950	Sci Rep	IF
Guosheng Lyu	33628589	Cancer Biol Med	IHC

## Storage

### Storage:

Store at -20°C. Stable for one year after shipment.

### Storage Buffer:

PBS with 0.02% sodium azide and 50% glycerol pH 7.3.

Aliquoting is unnecessary for -20°C storage

\*\*\* 20ul sizes contain 0.1% BSA

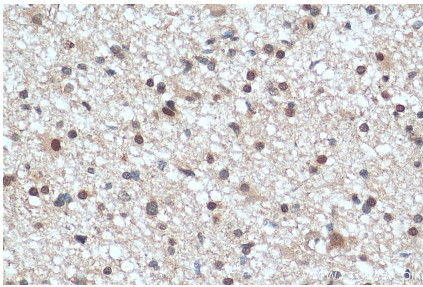
For technical support and original validation data for this product please contact:

T: 1 (888) 4PTGLAB (1-888-478-4522) (toll free in USA), or 1(312) 455-8498 (outside USA)

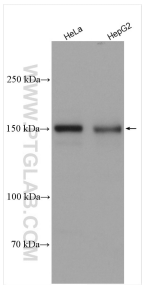
E: proteintech@ptglab.com  
W: ptglab.com

This product is exclusively available under Proteintech Group brand and is not available to purchase from any other manufacturer.

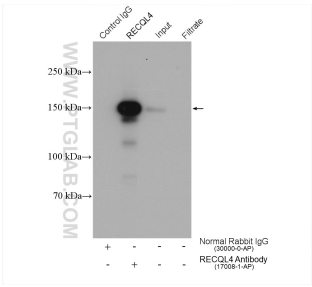
Selected Validation Data



Immunohistochemical analysis of paraffin-embedded human gliomas tissue slide using 17008-1-AP (RECQL4 antibody) at dilution of 1:200 (under 40x lens). Heat mediated antigen retrieval with Tris-EDTA buffer (pH 9.0).



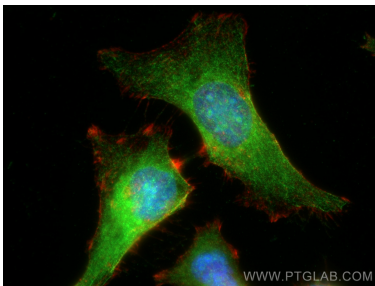
Various lysates were subjected to SDS PAGE followed by western blot with 17008-1-AP (RECQL4 antibody) at dilution of 1:2500 incubated at room temperature for 1.5 hours.



IP result of anti-RECQL4 (IP:17008-1-AP, 4ug; Detection:17008-1-AP 1:1000) with HeLa cells lysate 1880 ug.



Immunofluorescent analysis of (4% PFA) fixed paraffin-embedded Customer Sample customer using RECQL4 antibody (17008-1-AP) at dilution of 1:200 and CoraLite®488-Conjugated Goat Anti-Rabbit IgG(H+L) (SA00013-2). Heat mediated antigen retrieval with Tris-EDTA buffer (pH 9.0).



Immunofluorescent analysis of (-20°C Ethanol) fixed HeLa cells using RECQL4 antibody (17008-1-AP) at dilution of 1:400 and CoraLite®488-Conjugated AffiniPure Goat Anti-Rabbit IgG(H+L), CL594-Phalloidin (red).