

For Research Use Only

RPL10 Polyclonal antibody

Catalog Number: 17013-1-AP

6 Publications



Basic Information

Catalog Number:

17013-1-AP

Size:

150ul, Concentration: 500 ug/ml by Nanodrop;

Source:

Rabbit

Isotype:

IgG

Immunogen Catalog Number:

AG9969

GenBank Accession Number:

BC003358

GeneID (NCBI):

6134

UNIPROT ID:

P27635

Full Name:

ribosomal protein L10

Calculated MW:

25 kDa

Observed MW:

25 kDa

Purification Method:

Antigen affinity purification

Recommended Dilutions:

WB 1:1000-1:6000

IHC 1:50-1:500

Applications

Tested Applications:

WB, IHC, ELISA

Cited Applications:

WB, IHC, IF

Species Specificity:

human, mouse, rat

Cited Species:

human, mouse

Positive Controls:

WB : HeLa cells, COLO 320 cells, mouse brain tissue, rat brain tissue

IHC : mouse brain tissue, human liver tissue

Note-IHC: suggested antigen retrieval with TE buffer pH 9.0; (*) Alternatively, antigen retrieval may be performed with citrate buffer pH 6.0

Background Information

RPL10, also named as Large ribosomal subunit protein uL16, is a 214 amino acid protein, which belongs to the universal ribosomal protein uL16 family. RPL10 is a component of the large ribosomal subunit and is down-regulated during adipocyte, kidney, and heart differentiation. RPL10 shares 98% amino acid sequence with RPL10L, so RPL10 antibody is able to recognize RPL10 and RPL10L protein.

Notable Publications

Author	Pubmed ID	Journal	Application
Kai Ma	35637200	Cell Discov	WB
Stephanie Herrlinger	31064784	Development	IF
Xinlu Liu	35303583	Transl Oncol	WB,IHC

Storage

Storage:

Store at -20°C. Stable for one year after shipment.

Storage Buffer:

PBS with 0.02% sodium azide and 50% glycerol, pH7.3

Aliquoting is unnecessary for -20°C storage

*** 20ul sizes contain 0.1% BSA

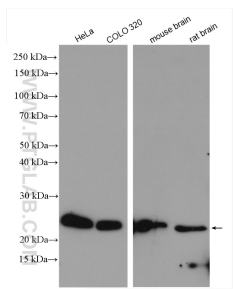
For technical support and original validation data for this product please contact:

T: 1 (888) 4PTGLAB (1-888-478-4522) (toll free in USA), or 1(312) 455-8498 (outside USA)

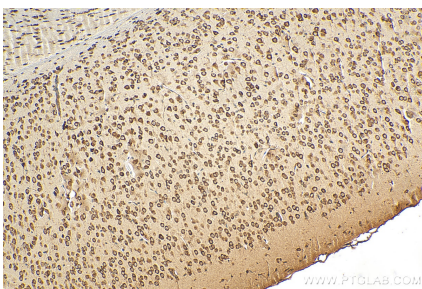
E: proteintech@ptglab.com
W: ptglab.com

This product is exclusively available under Proteintech Group brand and is not available to purchase from any other manufacturer.

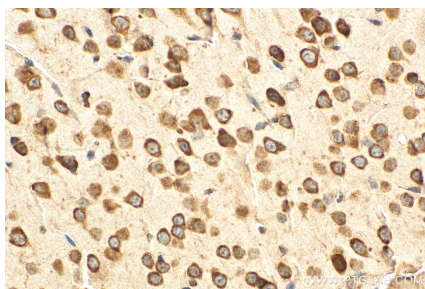
Selected Validation Data



Various lysates were subjected to SDS PAGE followed by western blot with 17013-1-AP (RPL10 antibody) at dilution of 1:3000 incubated at room temperature for 1.5 hours.



Immunohistochemical analysis of paraffin-embedded mouse brain tissue slide using 17013-1-AP (RPL10 antibody) at dilution of 1:200 (under 10x lens). Heat mediated antigen retrieval with Tris-EDTA buffer (pH 9.0).



Immunohistochemical analysis of paraffin-embedded mouse brain tissue slide using 17013-1-AP (RPL10 antibody) at dilution of 1:200 (under 40x lens). Heat mediated antigen retrieval with Tris-EDTA buffer (pH 9.0).