

For Research Use Only

# ADPRM Polyclonal antibody

Catalog Number: 17017-1-AP



## Basic Information

### Catalog Number:

17017-1-AP

### Size:

150ul, Concentration: 350 µg/ml by Nanodrop and 147 µg/ml by Bradford method using BSA as the standard;

### Source:

Rabbit

### Isotype:

IgG

### Immunogen Catalog Number:

AG9997

### GenBank Accession Number:

BC001294

### GeneID (NCBI):

56985

### UNIPROT ID:

Q3LIE5

### Full Name:

chromosome 17 open reading frame

48

### Calculated MW:

40 kDa

### Observed MW:

45 kDa

### Purification Method:

Antigen affinity purification

### Recommended Dilutions:

WB 1:1000-1:4000

## Applications

### Tested Applications:

WB, ELISA

### Species Specificity:

human, mouse, rat, pig

### Positive Controls:

WB : mouse brain tissue, rat brain tissue, pig brain tissue

## Background Information

ADPRM (ADP-ribose/CDP-alcohol diphosphatase, manganese dependent) is a manganese-dependent glycoprophosphatase primarily responsible for the breakdown of molecules such as ADP-ribose, IDP-ribose, CDP-glycerol, CDP-choline and CDP-ethanolamine in the cell. The protein is predicted to be located in the cytoplasm and possesses 2',3'-cyclic nucleotide 2'-phosphodiesterase activity, manganese ion-binding activity, and pyrophosphatase activity. ADPRM plays an important role in embryonic development, particularly in the formation of the heart and lungs. In addition, ADPRM may be involved in immune cell signaling, acting as a second messenger for ADP-ribose to activate TRPM2, which in turn regulates oxidative/nitrosative stress.

## Storage

### Storage:

Store at -20°C. Stable for one year after shipment.

### Storage Buffer:

PBS with 0.02% sodium azide and 50% glycerol, pH7.3

Aliquoting is unnecessary for -20°C storage

\*\*\* 20ul sizes contain 0.1% BSA

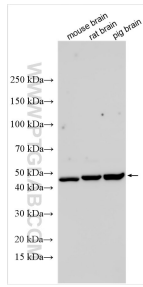
For technical support and original validation data for this product please contact:

T: 1 (888) 4PTGLAB (1-888-478-4522) (toll free in USA), or 1(312) 455-8498 (outside USA)

E: [proteintech@ptglab.com](mailto:proteintech@ptglab.com)  
W: [ptglab.com](http://ptglab.com)

This product is exclusively available under Proteintech Group brand and is not available to purchase from any other manufacturer.

## Selected Validation Data



Various lysates were subjected to SDS PAGE followed by western blot with 17017-1-AP (C17orf48 antibody) at dilution of 1:2000 incubated at room temperature for 1.5 hours.