

For Research Use Only

ADPRM Polyclonal antibody, PBS Only

Catalog Number:17017-1-PBS



Basic Information

Catalog Number: 17017-1-PBS	GenBank Accession Number: BC001294	Purification Method: Antigen affinity purification
Size: 100ug , Concentration: 1 mg/ml by Nanodrop;	GeneID (NCBI): 56985	
Source: Rabbit	UNIPROT ID: Q3LIE5	
Isotype: IgG	Full Name: chromosome 17 open reading frame 48	
Immunogen Catalog Number: AG9997	Calculated MW: 40 kDa	
	Observed MW: 45 kDa	

Applications

Tested Applications:
WB, Indirect ELISA

Species Specificity:
human, mouse, rat, pig

Background Information

ADPRM (ADP-ribose/CDP-alcohol diphosphatase, manganese dependent) is a manganese-dependent glyco-phosphatase primarily responsible for the breakdown of molecules such as ADP-ribose, IDP-ribose, CDP-glycerol, CDP-choline and CDP-ethanolamine in the cell. The protein is predicted to be located in the cytoplasm and possesses 2',3'-cyclic nucleotide 2'-phosphodiesterase activity, manganese ion-binding activity, and pyrophosphatase activity. ADPRM plays an important role in embryonic development, particularly in the formation of the heart and lungs. In addition, ADPRM may be involved in immune cell signaling, acting as a second messenger for ADP-ribose to activate TRPM2, which in turn regulates oxidative/nitrosative stress.

Storage

Storage:
Store at -80°C.

Storage Buffer:
PBS only, pH7.3

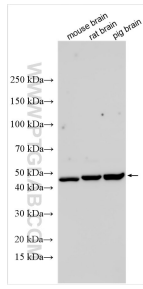
For technical support and original validation data for this product please contact:

T: 1 (888) 4PTGLAB (1-888-478-4522) (toll free in USA), or 1(312) 455-8498 (outside USA)

E: proteintech@ptglab.com
W: ptglab.com

This product is exclusively available under Proteintech Group brand and is not available to purchase from any other manufacturer.

Selected Validation Data



Various lysates were subjected to SDS PAGE followed by western blot with 17017-1-AP (C17orf48 antibody) at dilution of 1:2000 incubated at room temperature for 1.5 hours. This data was developed using the same antibody clone with 17017-1-PBS in a different storage buffer formulation.