

KDELC1 Polyclonal antibody

Catalog Number: 17018-1-AP

Basic Information

Catalog Number:

17018-1-AP

Size:

150ul , Concentration: 133 µg/ml by Bradford method using BSA as the standard;

Source:

Rabbit

Isotype:

IgG

Immunogen Catalog Number:

AG9999

GenBank Accession Number:

BC001297

GeneID (NCBI):

79070

UNIPROT ID:

Q6UW63

Full Name:

KDEL (Lys-Asp-Glu-Leu) containing 1

Calculated MW:

58 kDa

Observed MW:

50 kDa

Purification Method:

Antigen affinity purification

Applications

Tested Applications:

WB, ELISA

Species Specificity:

human

Background Information

KDELC1, also named as EP58 and Erp58, belongs to the KDELC family. Soluble proteins in the endoplasmic reticulum (ER) contain a specific carboxyterminal sequence KDEL (Lys-Asp-Glu-Leu) and include the coat proteins required for vesicle budding from the ER. KDELC1 shares no significant homology to any of the known ER-resident proteins. It is primarily expressed in embryo, placenta and adult heart.

Storage

Storage:

Store at -20°C. Stable for one year after shipment.

Storage Buffer:

PBS with 0.02% sodium azide and 50% glycerol pH 7.3.

Aliquoting is unnecessary for -20°C storage

*** 20ul sizes contain 0.1% BSA

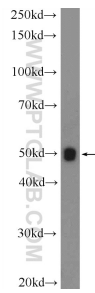
For technical support and original validation data for this product please contact:

T: 1 (888) 4PTGLAB (1-888-478-4522) (toll free in USA), or 1(312) 455-8498 (outside USA)

E: proteintech@ptglab.com
W: ptglab.com

This product is exclusively available under Proteintech Group brand and is not available to purchase from any other manufacturer.

Selected Validation Data



SMMC-7721 cells were subjected to SDS PAGE followed by western blot with 17018-1-AP (KDEL C1 Antibody) at dilution of 1:300 incubated at room temperature for 1.5 hours.