

For Research Use Only

PPM1F Polyclonal antibody

Catalog Number: 17020-1-AP

Featured Product

2 Publications



Basic Information

Catalog Number:

17020-1-AP

Size:

150ul, Concentration: 500 ug/ml by Nanodrop and 333 ug/ml by Bradford method using BSA as the standard;

Source:

Rabbit

Isotype:

IgG

Immunogen Catalog Number:

AG10186

GenBank Accession Number:

BC071989

GeneID (NCBI):

9647

UNIPROT ID:

P49593

Full Name:

protein phosphatase 1F (PP2C domain containing)

Calculated MW:

453 aa, 50 kDa

Observed MW:

50 kDa

Purification Method:

Antigen affinity purification

Recommended Dilutions:

WB 1:1000-1:3000

IP 0.5-4.0 ug for 1.0-3.0 mg of total protein lysate

IHC 1:50-1:500

IF/ICC 1:50-1:500

Applications

Tested Applications:

WB, IHC, IF/ICC, IP, ELISA

Cited Applications:

WB

Species Specificity:

human

Cited Species:

human, mouse

Positive Controls:

WB: MCF-7 cells, L02 cells, HepG2 cells, human liver tissue, K-562 cells, HeLa cells

IP: MCF-7 cells,

IHC: human ovary cancer tissue, human colon cancer tissue

IF/ICC: HepG2 cells,

Note-IHC: suggested antigen retrieval with TE buffer pH 9.0; (*) Alternatively, antigen retrieval may be performed with citrate buffer pH 6.0

Background Information

Mg²⁺/Mn²⁺-dependent protein phosphatase 1F (PPM1F) belongs to the PP2C family of Ser/Thr protein phosphatases and is the critical enzyme responsible for dephosphorylating the threonine motif. PPM1F is ubiquitous in various tissues and organs (PMID: 26498692). High expression of PPM1F was positively associated with poor survival and tumor recurrence in patients with cancers and PPM1F might be a potential biomarker in HCC patients (PMID: 30470261).

Notable Publications

Author	Pubmed ID	Journal	Application
Yahui Leng	39133386	Clin Transl Oncol	WB
Tanja M Grimm	33119040	J Cell Biol	WB

Storage

Storage:

Store at -20°C. Stable for one year after shipment.

Storage Buffer:

PBS with 0.02% sodium azide and 50% glycerol pH 7.3.

Aliquoting is unnecessary for -20°C storage

*** 20ul sizes contain 0.1% BSA

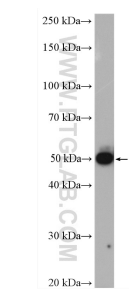
For technical support and original validation data for this product please contact:

T: 1 (888) 4PTGLAB (1-888-478-4522) (toll free in USA), or 1(312) 455-8498 (outside USA)

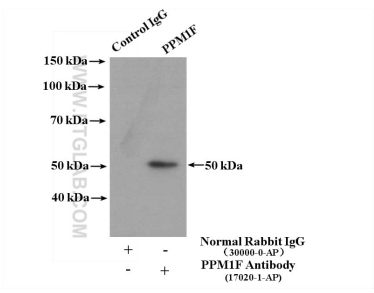
E: proteintech@ptglab.com
W: ptglab.com

This product is exclusively available under Proteintech Group brand and is not available to purchase from any other manufacturer.

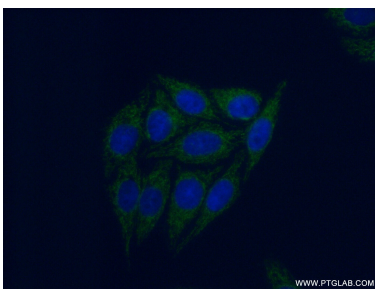
Selected Validation Data



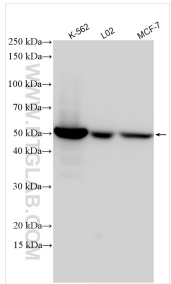
MCF-7 cells were subjected to SDS PAGE followed by western blot with 17020-1-AP (PPM1F antibody) at dilution of 1:2000 incubated at room temperature for 1.5 hours.



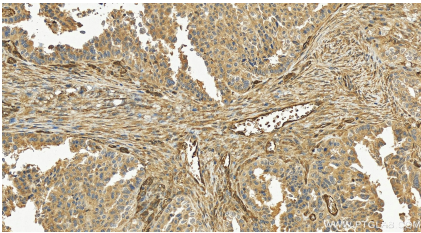
IP result of anti-PPM1F (IP:17020-1-AP, 4ug; Detection:17020-1-AP 1:700) with MCF-7 cells lysate 2800ug.



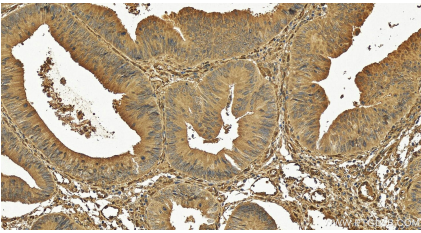
Immunofluorescent analysis of (-20°C Ethanol) fixed HepG2 cells using 17020-1-AP (PPM1F antibody) at dilution of 1:50 and Alexa Fluor 488-conjugated AffiniPure Goat Anti-Rabbit IgG(H+L).



Various lysates were subjected to SDS PAGE followed by western blot with 17020-1-AP (PPM1F antibody) at dilution of 1:10000 incubated at room temperature for 1.5 hours.



Immunohistochemical analysis of paraffin-embedded human ovary cancer tissue slide using 17020-1-AP (PPM1F antibody) at dilution of 1:200 (under 20x lens). Heat mediated antigen retrieval with Tris-EDTA buffer (pH 9.0).



Immunohistochemical analysis of paraffin-embedded human colon cancer tissue slide using 17020-1-AP (PPM1F antibody) at dilution of 1:100 (under 20x lens). Heat mediated antigen retrieval with Tris-EDTA buffer (pH 9.0).