

For Research Use Only

APCDD1 Polyclonal antibody

Catalog Number: 17024-1-AP



Basic Information

Catalog Number: 17024-1-AP	GenBank Accession Number: BC053324	Purification Method: Antigen affinity purification
Size: 150ul , Concentration: 450 ug/ml by Nanodrop;	GeneID (NCBI): 147495	Recommended Dilutions: WB 1:500-1:2000 IHC 1:50-1:500
Source: Rabbit	UNIPROT ID: Q8J025	
Isotype: IgG	Full Name: adenomatosis polyposis coli down-regulated 1	
Immunogen Catalog Number: AG10303	Calculated MW: 514 aa, 59 kDa	
	Observed MW: 68 kDa	

Applications

Tested Applications: WB, IHC, ELISA	Positive Controls:
Species Specificity: human, mouse	WB : COLO 320 cells, Raji cells, mouse brain tissue, mouse heart tissue, mouse skin tissue
Note-IHC: suggested antigen retrieval with TE buffer pH 9.0 ; (*) Alternatively, antigen retrieval may be performed with citrate buffer pH 6.0	IHC : human heart tissue,

Background Information

APCDD1 (adenomatosis polyposis coli down-regulated 1) is a membrane-bound glycoprotein conserved during vertebrate evolution that regulates important biological processes controlled by Wnt signaling (PMID: 26170146). APCDD1 is a membrane-bound glycoprotein that is abundantly expressed in human HF's (hair follicles) and can interact in vitro with WNT3A and LRP5, two essential components of Wnt signaling (PMID: 20393562). APCDD1 may be modified by glycosylation.

Storage

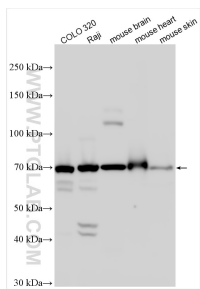
Storage:
Store at -20°C. Stable for one year after shipment.
Storage Buffer:
PBS with 0.02% sodium azide and 50% glycerol pH 7.3.
Aliquoting is unnecessary for -20°C storage

***** 20ul sizes contain 0.1% BSA**

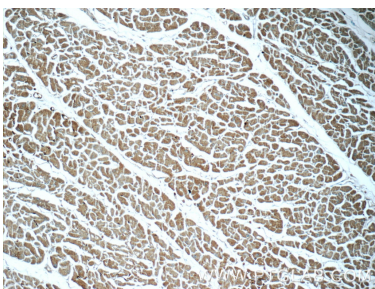
For technical support and original validation data for this product please contact:
T: 1 (888) 4PTGLAB (1-888-478-4522) (toll free in USA), or 1(312) 455-8498 (outside USA)
E: proteintech@ptglab.com
W: ptglab.com

This product is exclusively available under Proteintech Group brand and is not available to purchase from any other manufacturer.

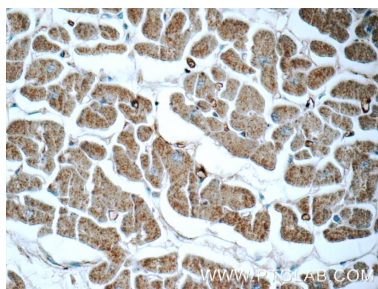
Selected Validation Data



Various lysates were subjected to SDS PAGE followed by western blot with 17024-1-AP (APCDD1 antibody) at dilution of 1:1000 incubated at room temperature for 1.5 hours.



Immunohistochemical analysis of paraffin-embedded human heart tissue slide using 17024-1-AP (APCDD1 Antibody) at dilution of 1:50 (under 10x lens).



Immunohistochemical analysis of paraffin-embedded human heart tissue slide using 17024-1-AP (APCDD1 Antibody) at dilution of 1:50 (under 40x lens).