

For Research Use Only

GPR132 Polyclonal antibody

Catalog Number: 17026-1-AP

Featured Product

5 Publications



Basic Information

Catalog Number:

17026-1-AP

Size:

150ul, Concentration: 260 ug/ml by Nanodrop and 173 ug/ml by Bradford method using BSA as the standard;

Source:

Rabbit

Isotype:

IgG

Immunogen Catalog Number:

AG10325

GenBank Accession Number:

BC084546

GeneID (NCBI):

29933

UNIPROT ID:

Q9UNW8

Full Name:

G protein-coupled receptor 132

Calculated MW:

380 aa, 43 kDa

Purification Method:

Antigen affinity purification

Recommended Dilutions:

IHC 1:20-1:200

Applications

Tested Applications:

IHC, ELISA

Cited Applications:

IHC

Species Specificity:

human, mouse, rat

Cited Species:

human, mouse

Note-IHC: suggested antigen retrieval with TE buffer pH 9.0; (*) Alternatively, antigen retrieval may be performed with citrate buffer pH 6.0

Positive Controls:

IHC : human kidney tissue,

Background Information

GPR132, also known as G2A (G2 accumulation protein), belongs to the G-protein coupled receptor (GPCR) 1 family. GPR132 is a DNA damage and stress inducible GPCR that blocks cells in G2/M. It functions at the G2/M checkpoint to delay mitosis and may serve as a mechanism for T and B cells and other cell types to slow their proliferation and repair damaged DNA to ensure proper replication (PMID: 9770487). Lysophosphatidylcholine (LPC) is a high affinity ligand for GPR132 (PMID: 15653487).

Notable Publications

Author	Pubmed ID	Journal	Application
Ken Matoba	33333086	Neurosci Res	
Man Luo	36531060	Front Oncol	
Ryuta Sugihara	37524709	Nat Commun	

Storage

Storage:

Store at -20°C. Stable for one year after shipment.

Storage Buffer:

PBS with 0.02% sodium azide and 50% glycerol pH 7.3.

Aliquoting is unnecessary for -20°C storage

*** 20ul sizes contain 0.1% BSA

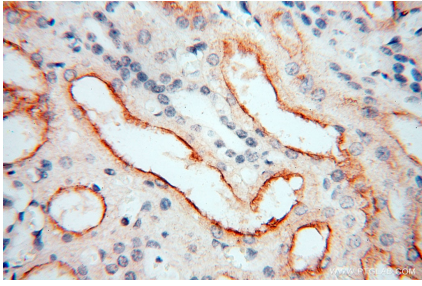
For technical support and original validation data for this product please contact:

T: 1 (888) 4PTGLAB (1-888-478-4522) (toll free in USA), or 1(312) 455-8498 (outside USA)

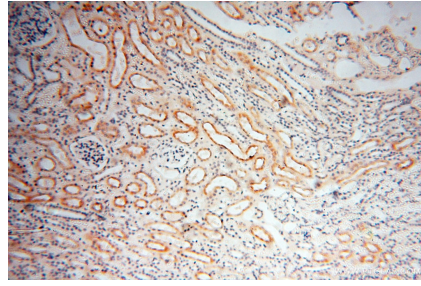
E: proteintech@ptglab.com
W: ptglab.com

This product is exclusively available under Proteintech Group brand and is not available to purchase from any other manufacturer.

Selected Validation Data



Immunohistochemical analysis of paraffin-embedded human kidney using 17026-1-AP (GPR132 antibody) at dilution of 1:50 (under 40x lens).



Immunohistochemical analysis of paraffin-embedded human kidney using 17026-1-AP (GPR132 antibody) at dilution of 1:50 (under 10x lens).