

For Research Use Only

CRLF1 Polyclonal antibody

Catalog Number: 17027-1-AP



Basic Information

Catalog Number: 17027-1-AP	GenBank Accession Number: BC044634	Purification Method: Antigen affinity purification
Size: 150ul , Concentration: 207 µg/ml by Bradford method using BSA as the standard;	GeneID (NCBI): 9244	
Source: Rabbit	Full Name: cytokine receptor-like factor 1	
Isotype: IgG	Calculated MW: 422 aa, 46 kDa	
Immunogen Catalog Number: AG10382		

Applications

Tested Applications:
IHC, ELISA

Species Specificity:
human

Background Information

Storage

Storage:
Store at -20°C. Stable for one year after shipment.

Storage Buffer:
PBS with 0.02% sodium azide and 50% glycerol pH 7.3.

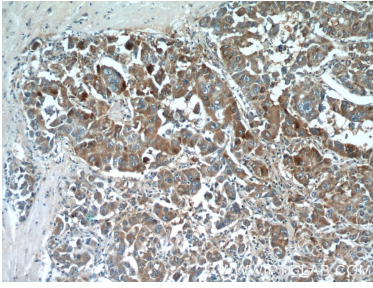
Aliquoting is unnecessary for -20°C storage

*** 20ul sizes contain 0.1% BSA

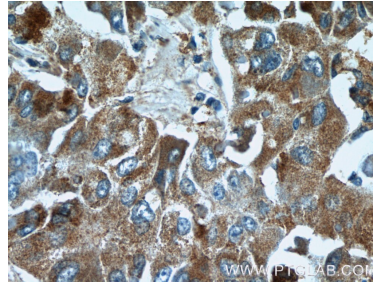
For technical support and original validation data for this product please contact:
T: 1 (888) 4PTGLAB (1-888-478-4522) (toll free in USA), or 1(312) 455-8498 (outside USA) E: proteintech@ptglab.com
W: ptglab.com

This product is exclusively available under Proteintech Group brand and is not available to purchase from any other manufacturer.

Selected Validation Data



Immunohistochemical analysis of paraffin-embedded human liver cancer tissue slide using 17027-1-AP (CRLF1 Antibody) at dilution of 1:50 (under 10x lens).



Immunohistochemical analysis of paraffin-embedded human liver cancer tissue slide using 17027-1-AP (CRLF1 Antibody) at dilution of 1:50 (under 40x lens).