

For Research Use Only

RPL18 Polyclonal antibody

Catalog Number: 17029-1-AP **2 Publications**



Basic Information

Catalog Number: 17029-1-AP	GenBank Accession Number: BC009708	Purification Method: Antigen affinity purification
Size: 150ul , Concentration: 170 ug/ml by Nanodrop and 140 ug/ml by Bradford method using BSA as the standard;	GeneID (NCBI): 6141	Recommended Dilutions: WB 1:500-1:1000
Source: Rabbit	UNIPROT ID: Q07020	
Isotype: IgG	Full Name: ribosomal protein L18	
Immunogen Catalog Number: AG10474	Calculated MW: 188 aa, 22 kDa	
	Observed MW: 22-26 kDa	

Applications

Tested Applications: WB, ELISA	Positive Controls: WB : HeLa cells, HEK-293 cells, HepG2 cells
Cited Applications: WB	
Species Specificity: human, mouse, rat	
Cited Species: human, pig	

Notable Publications

Author	Pubmed ID	Journal	Application
Qinghe Zhu	36084747	Virus Res	WB
Magdalena Wolczyk	37123244	iScience	WB

Storage

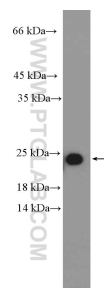
Storage:
Store at -20°C. Stable for one year after shipment.
Storage Buffer:
PBS with 0.02% sodium azide and 50% glycerol pH 7.3.
Aliquoting is unnecessary for -20°C storage

*** 20ul sizes contain 0.1% BSA

For technical support and original validation data for this product please contact:
T: 1 (888) 4PTGLAB (1-888-478-4522) (toll free in USA), or 1(312) 455-8498 (outside USA)
E: proteintech@ptglab.com
W: ptglab.com

This product is exclusively available under Proteintech Group brand and is not available to purchase from any other manufacturer.

Selected Validation Data



HeLa cells were subjected to SDS PAGE followed by western blot with 17029-1-AP (RPL18 Antibody) at dilution of 1:600 incubated at room temperature for 1.5 hours.