

For Research Use Only

GRK5 Polyclonal antibody

Catalog Number: 17032-1-AP

Featured Product

10 Publications



Basic Information

Catalog Number:

17032-1-AP

Size:

150ul, Concentration: 500 ug/ml by Nanodrop;

Source:

Rabbit

Isotype:

IgG

Immunogen Catalog Number:

AG10511

GenBank Accession Number:

BC064506

GeneID (NCBI):

2869

UNIPROT ID:

P34947

Full Name:

G protein-coupled receptor kinase 5

Calculated MW:

590 aa, 68 kDa

Observed MW:

70 kDa

Purification Method:

Antigen affinity purification

Recommended Dilutions:

WB 1:1000-1:4000

IHC 1:50-1:500

Applications

Tested Applications:

WB, IHC, ELISA

Cited Applications:

WB, IHC, IF

Species Specificity:

human, mouse, rat

Cited Species:

human, mouse, rat

Note-IHC: suggested antigen retrieval with TE buffer pH 9.0; (*) Alternatively, antigen retrieval may be performed with citrate buffer pH 6.0

Positive Controls:

WB : HeLa cells, human skeletal muscle tissue, HepG2 cells mouse skeletal muscle tissue, rat skeletal muscle tissue

IHC : human skeletal muscle tissue, mouse heart tissue

Background Information

GRK5, also named as GPRK5, belongs to the protein kinase superfamily, AGC Ser/Thr protein kinase family and GPRK subfamily. It is Serine/threonine kinase that phosphorylates preferentially the activated forms of a variety of G-protein-coupled receptors (GPCRs). Phosphorylation of ARRB1 by GRK5 inhibits G-protein independent MAPK1/MAPK3 signaling downstream of 5HT₄-receptors. GRK5 is crucial for proper neuronal morphogenesis and the establishment of functional neuronal circuitry.

Notable Publications

Author	Pubmed ID	Journal	Application
Masakazu Toya	34006987	Sci Rep	IHC,IF
Takuya Sueishi	31696655	Arthritis Rheumatol	IHC,IF
Xiaobai He	32112783	Biochim Biophys Acta Mol Cell Res	WB

Storage

Storage:

Store at -20°C. Stable for one year after shipment.

Storage Buffer:

PBS with 0.02% sodium azide and 50% glycerol pH 7.3.

Aliquoting is unnecessary for -20°C storage

*** 20ul sizes contain 0.1% BSA

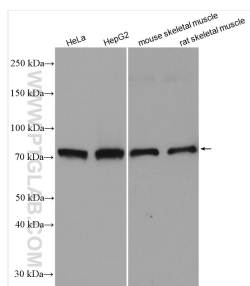
For technical support and original validation data for this product please contact:

T: 1 (888) 4PTGLAB (1-888-478-4522) (toll free in USA), or 1(312) 455-8498 (outside USA)

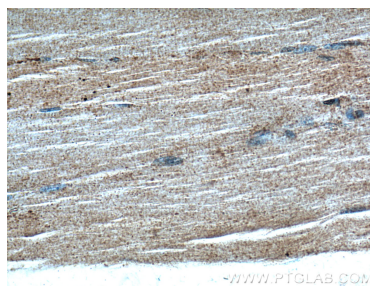
E: proteintech@ptglab.com
W: ptglab.com

This product is exclusively available under Proteintech Group brand and is not available to purchase from any other manufacturer.

Selected Validation Data



Various lysates were subjected to SDS PAGE followed by western blot with 17032-1-AP (GRK5 antibody) at dilution of 1:2000 incubated at room temperature for 1.5 hours.



Immunohistochemical analysis of paraffin-embedded human skeletal muscle tissue slide using 17032-1-AP (GRK5 Antibody) at dilution of 1:200 (under 40x lens).



Immunohistochemical analysis of paraffin-embedded human skeletal muscle tissue slide using 17032-1-AP (GRK5 Antibody) at dilution of 1:200 (under 10x lens).