

For Research Use Only

GALT Polyclonal antibody

Catalog Number: 17035-1-AP

2 Publications



Basic Information

Catalog Number:

17035-1-AP

Size:

150ul, Concentration: 133 ug/ml by Bradford method using BSA as the standard;

Source:

Rabbit

Isotype:

IgG

Immunogen Catalog Number:

AG10524

GenBank Accession Number:

BC015045

GeneID (NCBI):

2592

UNIPROT ID:

P07902

Full Name:

galactose-1-phosphate
uridylyltransferase

Calculated MW:

379 aa, 43 kDa

Observed MW:

45-48 kDa

Purification Method:

Antigen affinity purification

Recommended Dilutions:

WB 1:500-1:1000

IHC 1:20-1:200

Applications

Tested Applications:

WB, IHC, ELISA

Cited Applications:

WB

Species Specificity:

human

Cited Species:

human

Positive Controls:

WB : human liver tissue,

IHC : human liver tissue,

Note-IHC: suggested antigen retrieval with TE buffer pH 9.0; (*) Alternatively, antigen retrieval may be performed with citrate buffer pH 6.0

Background Information

GALT (galactose-1-phosphate uridylyltransferase) catalyses the second step in the Leloir pathway for the conversion of galactose-1-phosphate (Gal-1-P) into uridine diphosphogalactose (UDP-gal). Defects in GALT cause galactosemia.

Notable Publications

Author	Pubmed ID	Journal	Application
Yinxian Wen	25202993	PLoS One	WB
Sher Li Oh	31774565	J Inherit Metab Dis	WB

Storage

Storage:

Store at -20°C. Stable for one year after shipment.

Storage Buffer:

PBS with 0.02% sodium azide and 50% glycerol pH 7.3.

Aliquoting is unnecessary for -20°C storage

*** 20ul sizes contain 0.1% BSA

For technical support and original validation data for this product please contact:

T: 1 (888) 4PTGLAB (1-888-478-4522) (toll free in USA), or 1(312) 455-8498 (outside USA)

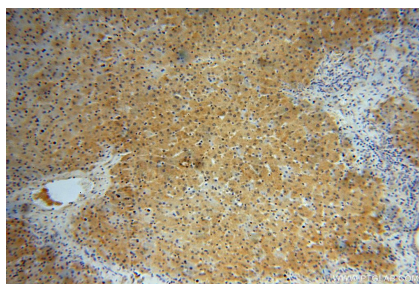
E: proteintech@ptglab.com
W: ptglab.com

This product is exclusively available under Proteintech Group brand and is not available to purchase from any other manufacturer.

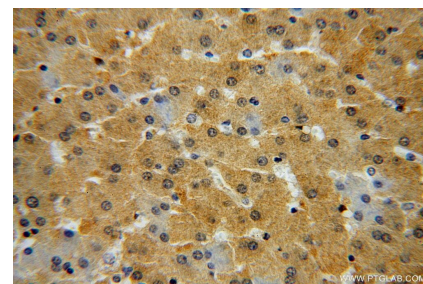
Selected Validation Data



human liver tissue were subjected to SDS PAGE followed by western blot with 17035-1-AP (GALT antibody) at dilution of 1:500 incubated at room temperature for 1.5 hours.



Immunohistochemical analysis of paraffin-embedded human liver using 17035-1-AP (GALT antibody) at dilution of 1:100 (under 10x lens).



Immunohistochemical analysis of paraffin-embedded human liver using 17035-1-AP (GALT antibody) at dilution of 1:100 (under 40x lens).