

For Research Use Only

# METAP2 Polyclonal antibody

Catalog Number: 17040-1-AP **1 Publications**



## Basic Information

<b>Catalog Number:</b> 17040-1-AP	<b>GenBank Accession Number:</b> BC013782	<b>Purification Method:</b> Antigen affinity purification
<b>Size:</b> 150ul , Concentration: 700 µg/ml by Nanodrop and 320 µg/ml by Bradford method using BSA as the standard;	<b>GeneID (NCBI):</b> 10988	<b>Recommended Dilutions:</b> WB 1:500-1:1000 IP 0.5-4.0 ug for IP and 1:200-1:1000 for WB
<b>Source:</b> Rabbit	<b>Full Name:</b> methionyl aminopeptidase 2	<b>IF 1:50-1:500</b>
<b>Isotype:</b> IgG	<b>Calculated MW:</b> 478 aa, 53 kDa	
<b>Immunogen Catalog Number:</b> AG10564	<b>Observed MW:</b> 67 kDa	

## Applications

<b>Tested Applications:</b> IF, IP, WB, ELISA	<b>Positive Controls:</b>
<b>Cited Applications:</b> WB	<b>WB :</b> HepG2 cells, MCF-7 cells, mouse pancreas tissue, mouse testis tissue
<b>Species Specificity:</b> human, mouse, rat	<b>IP :</b> MCF-7 cells,
<b>Cited Species:</b> mouse	<b>IF :</b> HepG2 cells,

## Background Information

MetAP2, also known as MAP2, P67EIF2 or p67, is one of the three known methionine aminopeptidases responsible for the removal of the N-terminal translation initiator methionine from newly synthesized proteins, which is a critical step in protein maturation (PMID: 27692546, 16568094). The enzyme binds two cobalt or manganese ions in its active site (PMID: 11524009, 12718546). As higher MetAP2 expression was observed in tumor (mesothelioma, neuroblastoma, and colorectal carcinoma) cells compared with normal cells, the enzyme serves as a target for anti-angiogenic compounds of natural origin, such as fumagillin and ovalicin (PMID: 11485930, 15927358, 15102683, 9224570). Selective inhibition of MetAP2 stops vascularization and tumor growth in animal models (PMID: 12118091). MetAP2 has 3 isoforms with molecular mass of 50-53 kDa and apparent molecular mass 67 kD.

## Notable Publications

Author	Pubmed ID	Journal	Application
Kotaro Fujii	30576652	Mol Cell	WB

## Storage

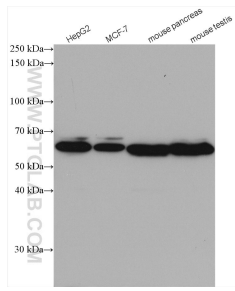
**Storage:**  
Store at -20°C. Stable for one year after shipment.  
**Storage Buffer:**  
PBS with 0.02% sodium azide and 50% glycerol pH 7.3.  
Aliquoting is unnecessary for -20°C storage

\*\*\* 20ul sizes contain 0.1% BSA

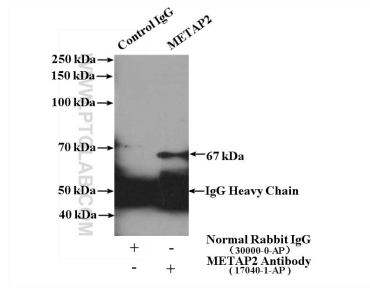
For technical support and original validation data for this product please contact:  
T: 1 (888) 4PTGLAB (1-888-478-4522) (toll free in USA), or 1(312) 455-8498 (outside USA)  
E: proteintech@ptglab.com  
W: ptglab.com

This product is exclusively available under Proteintech Group brand and is not available to purchase from any other manufacturer.

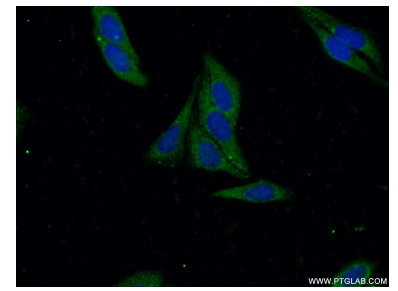
## Selected Validation Data



Various lysates were subjected to SDS PAGE followed by western blot with 17040-1-AP (METAP2 antibody) at dilution of 1:500 incubated at room temperature for 1.5 hours.



IP Result of anti-METAP2 (IP:17040-1-AP, 4 $\mu$ g; Detection:17040-1-AP 1:300) with MCF-7 cells lysate 3200 $\mu$ g.



Immunofluorescent analysis of (-20°C Ethanol) fixed HepG2 cells using 17040-1-AP (METAP2 antibody) at dilution of 1:50 and Alexa Fluor 488-conjugated AffiniPure Goat Anti-Rabbit IgG(H+L).