

For Research Use Only

MRPS11 Polyclonal antibody

Catalog Number: 17041-1-AP

3 Publications



Basic Information

Catalog Number:

17041-1-AP

Size:

150ul, Concentration: 350 ug/ml by Nanodrop and 147 ug/ml by Bradford method using BSA as the standard;

Source:

Rabbit

Isotype:

IgG

Immunogen Catalog Number:

AG10570

GenBank Accession Number:

BC012489

GeneID (NCBI):

64963

UNIPROT ID:

P82912

Full Name:

mitochondrial ribosomal protein S11

Calculated MW:

193 aa, 20 kDa

Observed MW:

17 kDa

Purification Method:

Antigen affinity purification

Recommended Dilutions:

WB: 1:500-1:2000

IHC: 1:20-1:200

Applications

Tested Applications:

WB, IHC, ELISA

Cited Applications:

WB, IHC

Species Specificity:

human, mouse, rat

Cited Species:

human, mouse

Note-IHC: suggested antigen retrieval with TE buffer pH 9.0; (*) Alternatively, antigen retrieval may be performed with citrate buffer pH 6.0

Positive Controls:

WB : HEK-293 cells, HepG2 cells

IHC : human kidney tissue,

Notable Publications

Author	Pubmed ID	Journal	Application
Christopher Lowden	34525369	Cell Rep	WB
Ying Hao	40114920	Front Immunol	WB,IHC
Elena Lavdovskaia	38992089	Nat Struct Mol Biol	WB

Storage

Storage:

Store at -20°C. Stable for one year after shipment.

Storage Buffer:

PBS with 0.02% sodium azide and 50% glycerol, pH7.3

Aliquoting is unnecessary for -20°C storage

*** 20ul sizes contain 0.1% BSA

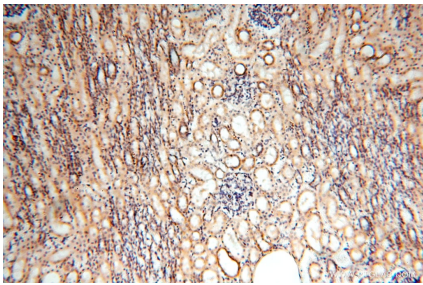
For technical support and original validation data for this product please contact:

T: 1 (888) 4PTGLAB (1-888-478-4522) (toll free in USA), or 1(312) 455-8498 (outside USA)

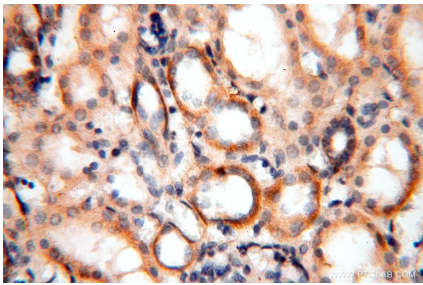
E: proteintech@ptglab.com
W: ptglab.com

This product is exclusively available under Proteintech Group brand and is not available to purchase from any other manufacturer.

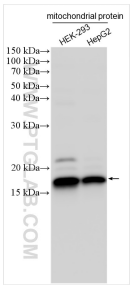
Selected Validation Data



Immunohistochemical analysis of paraffin-embedded human kidney using 17041-1-AP (MRPS11 antibody) at dilution of 1:100 (under 10x lens).



Immunohistochemical analysis of paraffin-embedded human kidney using 17041-1-AP (MRPS11 antibody) at dilution of 1:100 (under 40x lens).



Various lysates were subjected to SDS PAGE followed by western blot with 17041-1-AP (MRPS11 antibody) at dilution of 1:1000 incubated at room temperature for 1.5 hours.