

For Research Use Only

ROGDI Polyclonal antibody

Catalog Number: 17047-1-AP

Featured Product

5 Publications



Basic Information

Catalog Number:

17047-1-AP

Size:

150ul, Concentration: 300 ug/ml by Nanodrop and 233 ug/ml by Bradford method using BSA as the standard;

Source:

Rabbit

Isotype:

IgG

Immunogen Catalog Number:

AG10688

GenBank Accession Number:

BC012901

GeneID (NCBI):

79641

UNIPROT ID:

Q9GZN7

Full Name:

rogdi homolog (Drosophila)

Calculated MW:

287 aa, 32 kDa

Observed MW:

32 kDa

Purification Method:

Antigen affinity purification

Recommended Dilutions:

WB 1:500-1:2000

IP 0.5-4.0 ug for 1.0-3.0 mg of total protein lysate

IHC 1:20-1:200

Applications

Tested Applications:

WB, IP, IHC, ELISA

Cited Applications:

WB, IF, IHC

Species Specificity:

human, mouse

Cited Species:

human, rat, mouse, Drosophila

Note-IHC: suggested antigen retrieval with TE buffer pH 9.0; (*) Alternatively, antigen retrieval may be performed with citrate buffer pH 6.0

Positive Controls:

WB: human brain tissue, human kidney tissue, mouse brain tissue

IP: mouse brain tissue,

IHC: human kidney tissue, human placenta tissue, human spleen tissue

Background Information

ROGDI encoded by the ROGDI gene, which encodes a leucine-zipper protein with high expression in the human spinal cord and brain, acts as a positive regulator of cell proliferation. Defections of ROGDI are the cause of Kohlschuetter-Toenz syndrome (KTZS)

Notable Publications

Author	Pubmed ID	Journal	Application
Donatus Riemann	29150638	Sci Rep	WB, IF
Yi-Fan Chen	27636029	Cancer Biol Ther	WB
Alexandra Jimenez-Armijo	38172607	Sci Rep	IHC

Storage

Storage:

Store at -20°C. Stable for one year after shipment.

Storage Buffer:

PBS with 0.02% sodium azide and 50% glycerol pH 7.3.

Aliquoting is unnecessary for -20°C storage

*** 20ul sizes contain 0.1% BSA

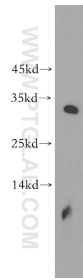
For technical support and original validation data for this product please contact:

T: 1 (888) 4PTGLAB (1-888-478-4522) (toll free in USA), or 1(312) 455-8498 (outside USA)

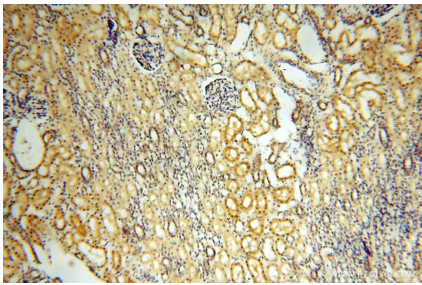
E: proteintech@ptglab.com
W: ptglab.com

This product is exclusively available under Proteintech Group brand and is not available to purchase from any other manufacturer.

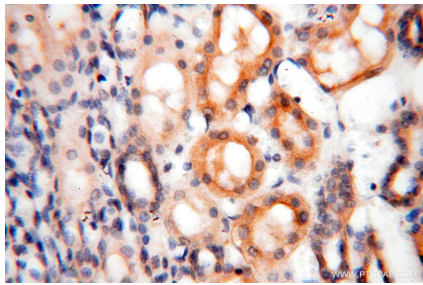
Selected Validation Data



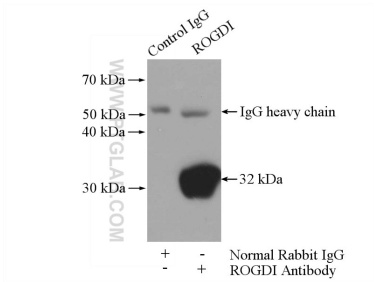
human brain tissue were subjected to SDS PAGE followed by western blot with 17047-1-AP (ROGDI antibody) at dilution of 1:500 incubated at room temperature for 1.5 hours.



Immunohistochemical analysis of paraffin-embedded human kidney using 17047-1-AP (ROGDI antibody) at dilution of 1:100 (under 10x lens).



Immunohistochemical analysis of paraffin-embedded human kidney using 17047-1-AP (ROGDI antibody) at dilution of 1:100 (under 40x lens).



IP result of anti-ROGDI (IP:17047-1-AP, 4ug; Detection:17047-1-AP 1:500) with mouse brain tissue lysate 4000ug.