

For Research Use Only

STARD10 Polyclonal antibody

Catalog Number: 17048-1-AP



Basic Information

Catalog Number: 17048-1-AP	GenBank Accession Number: BC007919	Purification Method: Antigen affinity purification
Size: 150ul , Concentration: 600 µg/ml by Nanodrop and 267 µg/ml by Bradford method using BSA as the standard;	GeneID (NCBI): 10809	Recommended Dilutions: WB 1:1000-1:8000 IP 0.5-4.0 ug for IP and 1:200-1:1000 for WB
Source: Rabbit	Full Name: StAR-related lipid transfer (START) domain containing 10	IHC 1:20-1:200
Isotype: IgG	Calculated MW: 291 aa, 33 kDa	
Immunogen Catalog Number: AG10705	Observed MW: 35 kDa	

Applications

Tested Applications: IHC, IP, WB, ELISA	Positive Controls: WB : MCF-7 cells, T-47D cells
Species Specificity: human	IP : HepG2 cells, IHC : human liver tissue,
Note-IHC: suggested antigen retrieval with TE buffer pH 9.0; (*) Alternatively, antigen retrieval may be performed with citrate buffer pH 6.0	

Background Information

STARD10 (START domain-containing protein 10, also known as PCTP-like protein) is highly expressed in liver and responsible to transfer phosphatidylcholine. STARD10 was identified as a protein overexpressed in breast cancer that cooperates with the ErbB family of receptor tyrosine kinases in cellular transformation (PMID: 15911624). This antibody detected duplicate bands between 35-40 kDa (PMID: 15150109).

Storage

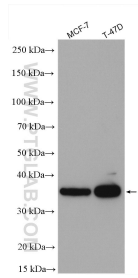
Storage:
Store at -20°C. Stable for one year after shipment.
Storage Buffer:
PBS with 0.02% sodium azide and 50% glycerol pH 7.3.
Aliquoting is unnecessary for -20°C storage

*** 20ul sizes contain 0.1% BSA

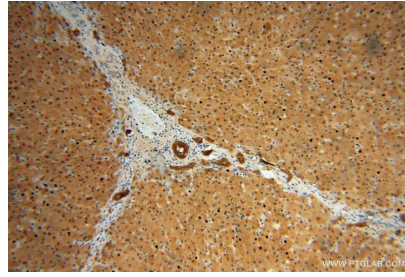
For technical support and original validation data for this product please contact:
T: 1 (888) 4PTGLAB (1-888-478-4522) (toll free in USA), or 1(312) 455-8498 (outside USA) E: proteintech@ptglab.com
W: ptglab.com

This product is exclusively available under Proteintech Group brand and is not available to purchase from any other manufacturer.

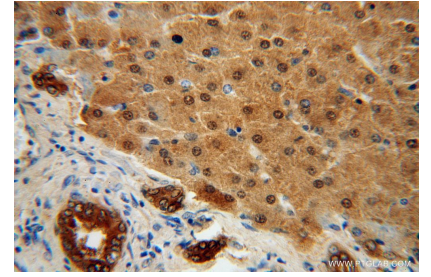
Selected Validation Data



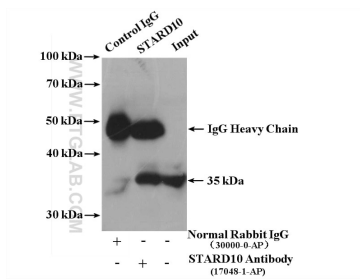
Various lysates were subjected to SDS PAGE followed by western blot with 17048-1-AP (STARD10 antibody) at dilution of 1:4000 incubated at room temperature for 1.5 hours.



Immunohistochemical analysis of paraffin-embedded human liver using 17048-1-AP (STARD10 antibody) at dilution of 1:100 (under 10x lens).



Immunohistochemical analysis of paraffin-embedded human liver using 17048-1-AP (STARD10 antibody) at dilution of 1:100 (under 40x lens).



IP result of anti-STARD10 (IP:17048-1-AP, 4 μ g; Detection:17048-1-AP 1:300) with HepG2 cells lysate 3400 μ g.