

For Research Use Only

GTF2IRD1 Polyclonal antibody

Catalog Number: 17052-1-AP



Basic Information

Catalog Number: 17052-1-AP	GenBank Accession Number: BC018136	Purification Method: Antigen affinity purification
Size: 150ul , Concentration: 700 µg/ml by Nanodrop and 227 µg/ml by Bradford method using BSA as the standard;	GeneID (NCBI): 9569	Recommended Dilutions: WB 1:500-1:3000 IP 0.5-4.0 ug for IP and 1:500-1:1000 for WB
Source: Rabbit	Full Name: GTF2I repeat domain containing 1	IHC 1:50-1:500 IF 1:50-1:500
Isotype: IgG	Calculated MW: 959 aa, 106 kDa	
Immunogen Catalog Number: AG10718	Observed MW: 145 kDa, 120 kDa	

Applications

Tested Applications:

IF, IHC, IP, WB, ELISA

Species Specificity:

human, mouse, rat

Note-IHC: suggested antigen retrieval with TE buffer pH 9.0; (*) Alternatively, antigen retrieval may be performed with citrate buffer pH 6.0

Positive Controls:

WB: HeLa cells, mouse brain tissue, mouse kidney tissue, mouse liver tissue

IP: mouse liver tissue,

IHC: human testis tissue, human spleen tissue, human kidney tissue, human heart tissue, human ovary tissue, human skin tissue, human brain tissue, human liver tissue

IF: HeLa cells,

Background Information

Storage

Storage:

Store at -20°C. Stable for one year after shipment.

Storage Buffer:

PBS with 0.02% sodium azide and 50% glycerol pH 7.3.

Aliquoting is unnecessary for -20°C storage

*** 20ul sizes contain 0.1% BSA

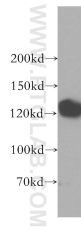
For technical support and original validation data for this product please contact:

T: 1 (888) 4PTGLAB (1-888-478-4522) (toll free in USA), or 1(312) 455-8498 (outside USA)

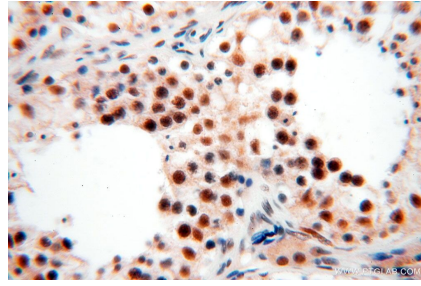
E: proteintech@ptglab.com
W: ptglab.com

This product is exclusively available under Proteintech Group brand and is not available to purchase from any other manufacturer.

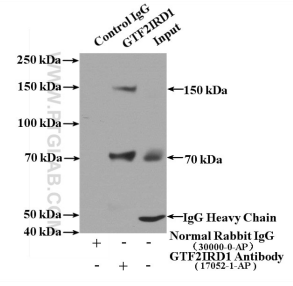
Selected Validation Data



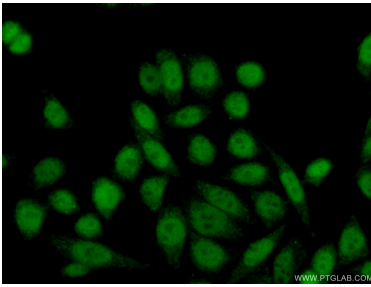
HeLa cells were subjected to SDS PAGE followed by western blot with 17052-1-AP (GTF2IRD1 antibody) at dilution of 1:500 incubated at room temperature for 1.5 hours.



Immunohistochemical analysis of paraffin-embedded human testis using 17052-1-AP (GTF2IRD1 antibody) at dilution of 1:100 (under 40x lens).



IP Result of anti-GTF2IRD1 (IP:17052-1-AP, 4ug; Detection:17052-1-AP 1:500) with mouse liver tissue lysate 4000ug.



Immunofluorescent analysis of (10% Formaldehyde) fixed HeLa cells using 17052-1-AP (GTF2IRD1 antibody) at dilution of 1:50 and Alexa Fluor 488-conjugated AffiniPure Goat Anti-Rabbit IgG(H+L).