

For Research Use Only

NFE2L1 Polyclonal antibody

Catalog Number: 17062-1-AP **2 Publications**



Basic Information

Catalog Number: 17062-1-AP	GenBank Accession Number: BC010623	Purification Method: Antigen affinity purification
Size: 150ul , Concentration: 240 µg/ml by Nanodrop and 133 µg/ml by Bradford method using BSA as the standard;	GeneID (NCBI): 4779	Recommended Dilutions: WB 1:500-1:1000 IF 1:200-1:800
Source: Rabbit	Full Name: nuclear factor (erythroid-derived 2)-like 1	
Isotype: IgG	Calculated MW: 772 aa, 85 kDa	
Immunogen Catalog Number: AG10832	Observed MW: 65 kDa	

Applications

Tested Applications: IF, WB, ELISA	Positive Controls: WB : HEK-293 cells, NIH/3T3 cells IF : HepG2 cells,
Cited Applications: IHC, WB	
Species Specificity: human, mouse	
Cited Species: human, rat	

Background Information

NFE2L1, also named as HBZ17, NRF1, TCF11 and LCR-F1, belongs to the bZIP family and CNC subfamily. It activates erythroid-specific, globin gene expression. NFE2L1 is involved in mediating ascorbic acid-induced osterix expression and osteoblast differentiation via binding to the antioxidant response element of the osterix promoter. NFE2L1, produced by osteoblasts, is involved in regulating osterix expression, osteoblast differentiation, and bone formation. (PMID:19887580). This antibody is a rabbit polyclonal antibody raised against residues near the C terminus of human ESRRG.

Notable Publications

Author	Pubmed ID	Journal	Application
Shuai Wang	32188015	Int J Mol Sci	WB
Jie Xing	37243831	Stem Cell Rev Rep	WB,IHC

Storage

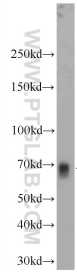
Storage:
Store at -20°C. Stable for one year after shipment.
Storage Buffer:
PBS with 0.02% sodium azide and 50% glycerol pH 7.3.
Aliquoting is unnecessary for -20°C storage

*** 20ul sizes contain 0.1% BSA

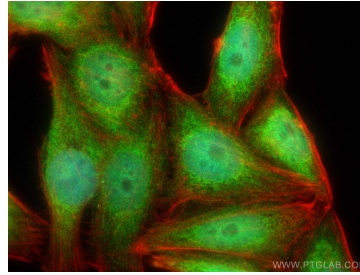
For technical support and original validation data for this product please contact:
T: 1 (888) 4PTGLAB (1-888-478-4522) (toll free in USA), or 1(312) 455-8498 (outside USA)
E: proteintech@ptglab.com
W: ptglab.com

This product is exclusively available under Proteintech Group brand and is not available to purchase from any other manufacturer.

Selected Validation Data



HEK-293 cells were subjected to SDS PAGE followed by western blot with 17062-1-AP (NFE2L1 Antibody) at dilution of 1:600 incubated at room temperature for 1.5 hours.



Immunofluorescent analysis of (4% PFA) fixed HepG2 cells using NFE2L1 antibody (17062-1-AP) at dilution of 1:400 and CoraLite@488-Conjugated AffiniPure Goat Anti-Rabbit IgG(H+L), CL594-phalloidin (red).