

For Research Use Only

SLFN1 Polyclonal antibody

Catalog Number: 17065-1-AP



Basic Information

Catalog Number:

17065-1-AP

Size:

150ul, Concentration: 200 ug/ml by Nanodrop and 147 ug/ml by Bradford method using BSA as the standard;

Source:

Rabbit

Isotype:

IgG

Immunogen Catalog Number:

AG10887

GenBank Accession Number:

BC022037

GeneID (NCBI):

200172

UNIPROT ID:

Q499Z3

Full Name:

schlafen-like 1

Calculated MW:

407 aa, 46 kDa

Observed MW:

46 kDa

Purification Method:

Antigen affinity purification

Recommended Dilutions:

WB 1:500-1:1000

IHC 1:20-1:200

Applications

Tested Applications:

WB, IHC, ELISA

Species Specificity:

human

Note-IHC: suggested antigen retrieval with TE buffer pH 9.0; (*) Alternatively, antigen retrieval may be performed with citrate buffer pH 6.0

Positive Controls:

WB : COLO 320 cells,

IHC : human kidney tissue, human brain tissue, human liver tissue, human ovary tissue, human placenta tissue, human skin tissue, human spleen tissue, human testis tissue

Background Information

SLFN1 belongs to the Schlafen family. It has some isoforms with MW 28 kDa and 39-46 kDa.

Storage

Storage:

Store at -20°C. Stable for one year after shipment.

Storage Buffer:

PBS with 0.02% sodium azide and 50% glycerol pH 7.3.

Aliquoting is unnecessary for -20°C storage

*** 20ul sizes contain 0.1% BSA

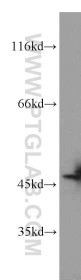
For technical support and original validation data for this product please contact:

T: 1 (888) 4PTGLAB (1-888-478-4522) (toll free in USA), or 1(312) 455-8498 (outside USA)

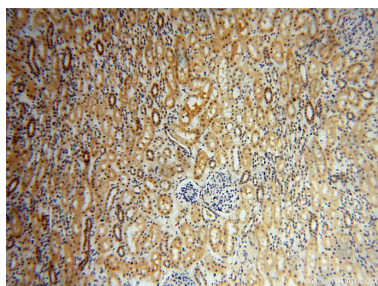
E: proteintech@ptglab.com
W: ptglab.com

This product is exclusively available under Proteintech Group brand and is not available to purchase from any other manufacturer.

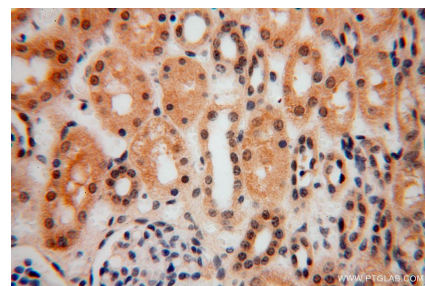
Selected Validation Data



COLO 320 cells were subjected to SDS PAGE followed by western blot with 17065-1-AP (SLFN1 antibody) at dilution of 1:800 incubated at room temperature for 1.5 hours.



Immunohistochemical analysis of paraffin-embedded human kidney using 17065-1-AP (SLFN1 antibody) at dilution of 1:100 (under 10x lens).



Immunohistochemical analysis of paraffin-embedded human kidney using 17065-1-AP (SLFN1 antibody) at dilution of 1:100 (under 40x lens).