

For Research Use Only

PPWD1 Polyclonal antibody

Catalog Number: 17106-1-AP



Basic Information

Catalog Number: 17106-1-AP	GenBank Accession Number: BC015385	Purification Method: Antigen affinity purification
Size: 150ul , Concentration: 200 µg/ml by Nanodrop and 140 µg/ml by Bradford method using BSA as the standard;	GeneID (NCBI): 23398	Recommended Dilutions: WB 1:500-1:1000
Source: Rabbit	Full Name: peptidylprolyl isomerase domain and WD repeat containing 1	
Isotype: IgG	Calculated MW: 646 aa, 74 kDa	
Immunogen Catalog Number: AG10785	Observed MW: 65-66 kDa	

Applications

Tested Applications: WB,ELISA	Positive Controls: WB : Sp2/O cells, HEK-293 cells, HeLa cells, Jurkat cells, mouse brain tissue, mouse kidney tissue, mouse liver tissue, mouse testis tissue
Species Specificity: human, mouse, rat	

Background Information

Peptidylprolyl isomerase domain and WD repeat-containing protein1 belongs to cyclophilin family. PPWD1 accelerate the folding of proteins. It catalyzes the cis-trans isomerization of proline imidic peptide bonds in oligopeptides. May be involved in pre-mRNA splicing. This antibody recognizes the C-terminal of PPWD1.

Storage

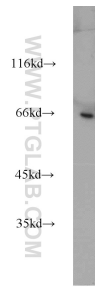
Storage:
Store at -20°C. Stable for one year after shipment.
Storage Buffer:
PBS with 0.02% sodium azide and 50% glycerol pH 7.3.
Aliquoting is unnecessary for -20°C storage

*** 20ul sizes contain 0.1% BSA

For technical support and original validation data for this product please contact:
T: 1 (888) 4PTGLAB (1-888-478-4522) (toll free in USA), or 1(312) 455-8498 (outside USA) E: proteintech@ptglab.com W: ptglab.com

This product is exclusively available under Proteintech Group brand and is not available to purchase from any other manufacturer.

Selected Validation Data



Sp2/0 cells were subjected to SDS PAGE followed by western blot with 17106-1-AP (PPWD1 antibody) at dilution of 1:1000 incubated at room temperature for 1.5 hours.