

For Research Use Only

PERLD1 Polyclonal antibody

Catalog Number: 17112-1-AP



Basic Information

Catalog Number: 17112-1-AP	GenBank Accession Number: BC010652	Purification Method: Antigen affinity purification
Size: 150ul , Concentration: 400 µg/ml by Nanodrop and 320 µg/ml by Bradford method using BSA as the standard;	GeneID (NCBI): 93210	Recommended Dilutions: WB 1:200-1:1000 IF 1:50-1:500
Source: Rabbit	Full Name: per1-like domain containing 1	
Isotype: IgG	Calculated MW: 320 aa, 36 kDa	
Immunogen Catalog Number: AG10796	Observed MW: 36-46 kDa	

Applications

Tested Applications: IF, WB, ELISA	Positive Controls:
Species Specificity: human	WB : HeLa cells, IF : HeLa cells,

Background Information

Storage

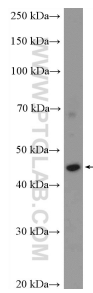
Storage:
Store at -20°C. Stable for one year after shipment.
Storage Buffer:
PBS with 0.02% sodium azide and 50% glycerol pH 7.3.
Aliquoting is unnecessary for -20°C storage

*** 20ul sizes contain 0.1% BSA

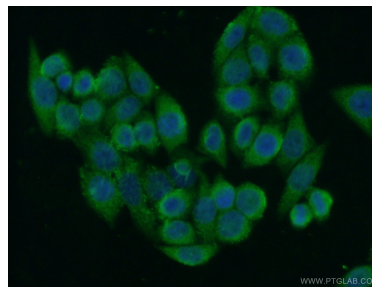
For technical support and original validation data for this product please contact:
T: 1 (888) 4PTGLAB (1-888-478-4522) (toll free in USA), or 1(312) 455-8498 (outside USA)
E: proteintech@ptglab.com
W: ptglab.com

This product is exclusively available under Proteintech Group brand and is not available to purchase from any other manufacturer.

Selected Validation Data



HeLa cells were subjected to SDS PAGE followed by western blot with 17112-1-AP (PERLD1 Antibody) at dilution of 1:300 incubated at room temperature for 1.5 hours.



Immunofluorescent analysis of (10% Formaldehyde) fixed HeLa cells using 17112-1-AP (PERLD1 antibody) at dilution of 1:50 and Alexa Fluor 488-conjugated AffiniPure Goat Anti-Rabbit IgG(H+L).