

For Research Use Only

OMA1 Polyclonal antibody

Catalog Number: 17116-1-AP

Featured Product

25 Publications



Basic Information

Catalog Number:

17116-1-AP

Size:

150ul, Concentration: 650 ug/ml by Nanodrop;

Source:

Rabbit

Isotype:

IgG

Immunogen Catalog Number:

AG10803

GenBank Accession Number:

BC012915

GeneID (NCBI):

115209

UNIPROT ID:

Q96E52

Full Name:

OMA1 homolog, zinc metallopeptidase (S. cerevisiae)

Calculated MW:

524 aa, 60 kDa

Observed MW:

34, 60 kDa

Purification Method:

Antigen affinity purification

Recommended Dilutions:

WB 1:1000-1:4000

IHC 1:250-1:1000

Applications

Tested Applications:

WB, IHC, ELISA

Cited Applications:

WB, IF

Species Specificity:

human

Cited Species:

human, mouse, rat

Note-IHC: suggested antigen retrieval with TE buffer pH 9.0; (*) Alternatively, antigen retrieval may be performed with citrate buffer pH 6.0

Positive Controls:

WB : HeLa cells, HEK-293T cells, K-562 cells, HepG2 cells, SKOV-3 cells, MDA-MB-231 cells

IHC : human liver tissue,

Background Information

OMA1 (Overlapping with the m-AAA protease 1 homolog) is also named as MPRP1 (Metalloprotease-related protein 1) and belongs to the peptidase M48 family. It is a zinc metalloprotease that spans the inner mitochondrial membrane with a number of predicted membrane spanning domains and the 60 kDa form of OMA1 rapidly accumulated concomitantly with the cleavage of all OPA1 variants, the 40 kDa form of OMA1 may be the mature form (M-OMA1), and the 35 kDa is a cleaved form (S-OMA1), with the 60 kDa form being the active enzyme (PMID:20334834, 30518622). This antibody is specific to OMA1.

Notable Publications

Author	Pubmed ID	Journal	Application
Ana A Baburamani	26393574	Int J Mol Sci	WB
Hongyu Sun	36233059	Int J Mol Sci	WB
Anaïs Aulas	30425239	Cell Death Dis	WB

Storage

Storage:

Store at -20°C. Stable for one year after shipment.

Storage Buffer:

PBS with 0.02% sodium azide and 50% glycerol pH 7.3.

Aliquoting is unnecessary for -20°C storage

*** 20ul sizes contain 0.1% BSA

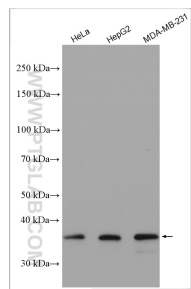
For technical support and original validation data for this product please contact:

T: 1 (888) 4PTGLAB (1-888-478-4522) (toll free in USA), or 1(312) 455-8498 (outside USA)

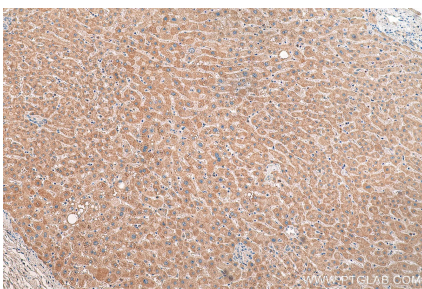
E: proteintech@ptglab.com
W: ptglab.com

This product is exclusively available under Proteintech Group brand and is not available to purchase from any other manufacturer.

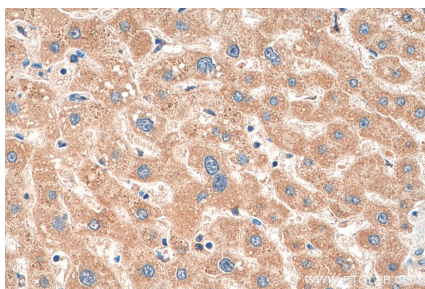
Selected Validation Data



Various lysates were subjected to SDS PAGE followed by western blot with 17116-1-AP (OMA1 antibody) at dilution of 1:2000 incubated at room temperature for 1.5 hours.



Immunohistochemical analysis of paraffin-embedded human liver tissue slide using 17116-1-AP (OMA1 antibody) at dilution of 1:500 (under 10x lens). Heat mediated antigen retrieval with Tris-EDTA buffer (pH 9.0).



Immunohistochemical analysis of paraffin-embedded human liver tissue slide using 17116-1-AP (OMA1 antibody) at dilution of 1:500 (under 40x lens). Heat mediated antigen retrieval with Tris-EDTA buffer (pH 9.0).