

For Research Use Only

CKAP2L Polyclonal antibody

Catalog Number: 17143-1-AP

Featured Product

2 Publications



Basic Information

Catalog Number:

17143-1-AP

Size:

150ul, Concentration: 350 ug/ml by Nanodrop and 227 ug/ml by Bradford method using BSA as the standard;

Source:

Rabbit

Isotype:

IgG

Immunogen Catalog Number:

AG10909

GenBank Accession Number:

BC036217

GeneID (NCBI):

150468

UNIPROT ID:

Q8IYA6

Full Name:

cytoskeleton associated protein 2-like

Calculated MW:

745 aa, 84 kDa

Observed MW:

84 kDa

Purification Method:

Antigen affinity purification

Recommended Dilutions:

WB 1:1000-1:5000

IP 0.5-4.0 ug for 1.0-3.0 mg of total protein lysate

IHC 1:50-1:500

Applications

Tested Applications:

WB, IHC, IP, ELISA

Cited Applications:

WB, IHC

Species Specificity:

human

Cited Species:

human, mouse

Note-IHC: suggested antigen retrieval with TE buffer pH 9.0; (*) Alternatively, antigen retrieval may be performed with citrate buffer pH 6.0

Positive Controls:

WB : HepG2 cells, K-562 cells, Jurkat cells

IP : Jurkat cells,

IHC : human colon cancer,

Notable Publications

Author	Pubmed ID	Journal	Application
Penghui Wang	32509063	Int J Clin Exp Pathol	WB
Yaqian Shi	37665628	FASEB J	WB, IHC

Storage

Storage:

Store at -20°C. Stable for one year after shipment.

Storage Buffer:

PBS with 0.02% sodium azide and 50% glycerol pH 7.3.

Aliquoting is unnecessary for -20°C storage

*** 20ul sizes contain 0.1% BSA

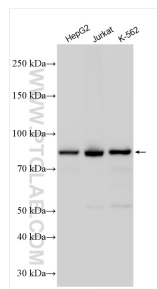
For technical support and original validation data for this product please contact:

T: 1 (888) 4PTGLAB (1-888-478-4522) (toll free in USA), or 1(312) 455-8498 (outside USA)

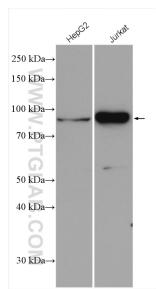
E: proteintech@ptglab.com
W: ptglab.com

This product is exclusively available under Proteintech Group brand and is not available to purchase from any other manufacturer.

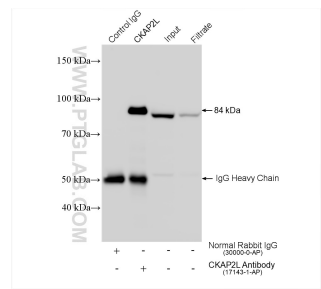
Selected Validation Data



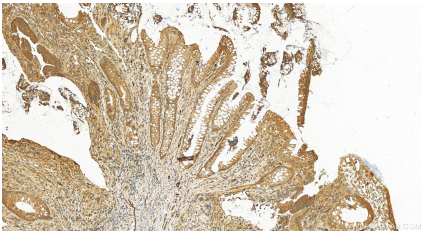
Various lysates were subjected to SDS PAGE followed by western blot with 17143-1-AP (CKAP2L antibody) at dilution of 1:2500 incubated at room temperature for 1.5 hours.



Various lysates were subjected to SDS PAGE followed by western blot with 17143-1-AP (CKAP2L antibody) at dilution of 1:1000 incubated at room temperature for 1.5 hours.



IP result of anti-CKAP2L (IP:17143-1-AP, 4ug; Detection:17143-1-AP 1:2000) with Jurkat cells lysate 1560 ug.



Immunohistochemical analysis of paraffin-embedded human colon cancer slide using 17143-1-AP (CKAP2L antibody) at dilution of 1:200 (under 20x lens). Heat mediated antigen retrieval with Tris-EDTA buffer (pH 9.0).