

For Research Use Only

ARHGEF28 Polyclonal antibody

Catalog Number: 17144-1-AP



Basic Information

Catalog Number:

17144-1-AP

Size:

150ul , Concentration: 400 ug/ml by Nanodrop;

Source:

Rabbit

Isotype:

IgG

Immunogen Catalog Number:

AG10915

GenBank Accession Number:

BC012946

GeneID (NCBI):

64283

UNIPROT ID:

Q8N1W1

Full Name:

Rho-guanine nucleotide exchange factor

Calculated MW:

192 kDa

Observed MW:

192 kDa

Purification Method:

Antigen affinity purification

Recommended Dilutions:

WB 1:200-1:1000

Applications

Tested Applications:

WB, ELISA

Species Specificity:

human

Positive Controls:

WB : HEK-293 cells, HeLa cells, Jurkat cells

Background Information

ARHGEF28, also known as RGNEF or p190RhoGEF, is a 190 kDa RNA binding protein (RBP) that contains a Dbp/PH domain capable of RhoA activation. ARHGEF28 interacts with low molecular weight neurofilament mRNA and may be involved in the formation of amyotrophic lateral sclerosis neurofilament aggregates.

Storage

Storage:

Store at -20°C. Stable for one year after shipment.

Storage Buffer:

PBS with 0.02% sodium azide and 50% glycerol pH 7.3.

Aliquoting is unnecessary for -20°C storage

*** 20ul sizes contain 0.1% BSA

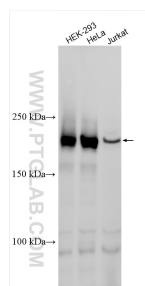
For technical support and original validation data for this product please contact:

T: 1 (888) 4PTGLAB (1-888-478-4522) (toll free in USA), or 1(312) 455-8498 (outside USA)

E: proteintech@ptglab.com
W: ptglab.com

This product is exclusively available under Proteintech Group brand and is not available to purchase from any other manufacturer.

Selected Validation Data



Various lysates were subjected to SDS PAGE followed by western blot with 17144-1-AP (RGNEF antibody) at dilution of 1:300 incubated at room temperature for 1.5 hours.