

For Research Use Only

ARHGEF28 Polyclonal antibody, PBS Only

Catalog Number: 17144-1-PBS



Basic Information

Catalog Number: 17144-1-PBS	GenBank Accession Number: BC012946	Purification Method: Antigen affinity purification
Size: 100ug, Concentration: 1 mg/ml by Nanodrop;	GeneID (NCBI): 64283	
Source: Rabbit	UNIPROT ID: Q8N1W1	
Isotype: IgG	Full Name: Rho-guanine nucleotide exchange factor	
Immunogen Catalog Number: AG10915	Calculated MW: 192 kDa	
	Observed MW: 192 kDa	

Applications

Tested Applications:
WB, Indirect ELISA

Species Specificity:
human

Background Information

ARHGEF28, also known as RGNEF or p190RhoGEF, is a 190 kDa RNA binding protein (RBP) that contains a Dbl/PH domain capable of RhoA activation. ARHGEF28 interacts with low molecular weight neurofilament mRNA and may be involved in the formation of amyotrophic lateral sclerosis neurofilament aggregates.

Storage

Storage:
Store at -80°C.

Storage Buffer:
PBS only, pH7.3

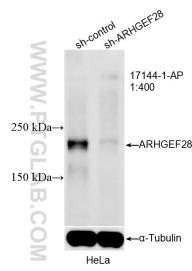
For technical support and original validation data for this product please contact:

T: 1 (888) 4PTGLAB (1-888-478-4522) (toll free in USA), or 1(312) 455-8498 (outside USA)

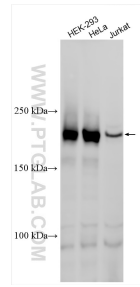
E: proteintech@ptglab.com
W: ptglab.com

This product is exclusively available under Proteintech Group brand and is not available to purchase from any other manufacturer.

Selected Validation Data



WB result of ARHGEF28 antibody (17144-1-AP; 1:400; incubated at room temperature for 1.5 hours) with sh-Control and sh-ARHGEF28 transfected HeLa cells. This data was developed using the same antibody clone with 17144-1-PBS in a different storage buffer formulation.



Various lysates were subjected to SDS PAGE followed by western blot with 17144-1-AP (RGNEF antibody) at dilution of 1:300 incubated at room temperature for 1.5 hours. This data was developed using the same antibody clone with 17144-1-PBS in a different storage buffer formulation.