

For Research Use Only

PYCR2 Polyclonal antibody

Catalog Number: 17146-1-AP

Featured Product

21 Publications



Basic Information

Catalog Number: 17146-1-AP	GenBank Accession Number: BC020553	Purification Method: Antigen affinity purification
Size: 150ul , Concentration: 500 µg/ml by Nanodrop and 253 µg/ml by Bradford method using BSA as the standard;	GeneID (NCBI): 29920	Recommended Dilutions: WB 1:2000-1:10000 IHC 1:1500-1:6000 IF 1:200-1:800
Source: Rabbit	Full Name: pyrroline-5-carboxylate reductase family, member 2	
Isotype: IgG	Calculated MW: 320 aa, 34 kDa	
Immunogen Catalog Number: AG10918	Observed MW: 34 kDa	

Applications

Tested Applications:

IF, IHC, WB, ELISA

Cited Applications:

IF, IHC, WB

Species Specificity:

human, mouse, rat

Cited Species:

human, mouse, African green monkey

Note-IHC: suggested antigen retrieval with TE buffer pH 9.0; (*) Alternatively, antigen retrieval may be performed with citrate buffer pH 6.0

Positive Controls:

WB : HeLa cells, L02 cells, Jurkat cells

IHC : human breast cancer tissue, human placenta tissue, human kidney tissue, human testis tissue, human lung tissue

IF : HeLa cells,

Background Information

PYCR2, also named as P5CR2, belongs to the pyrroline-5-carboxylate reductase family. It catalyses the reaction: L-proline + NAD(P)⁺ = 1-pyrroline-5-carboxylate + NAD(P)H. This antibody may have cross reaction to PYCR1 due to the high homology.

Notable Publications

Author	Pubmed ID	Journal	Application
Wei Liu	26598224	Sci Rep	WB
Yao Lu	35669517	Front Cell Dev Biol	WB
Simon Schwörer	32134147	EMBO J	WB

Storage

Storage:

Store at -20°C. Stable for one year after shipment.

Storage Buffer:

PBS with 0.02% sodium azide and 50% glycerol pH 7.3.

Aliquoting is unnecessary for -20°C storage

*** 20ul sizes contain 0.1% BSA

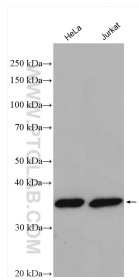
For technical support and original validation data for this product please contact:

T: 1 (888) 4PTGLAB (1-888-478-4522) (toll free in USA), or 1(312) 455-8498 (outside USA)

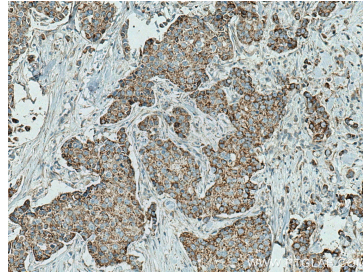
E: proteintech@ptglab.com
W: ptglab.com

This product is exclusively available under Proteintech Group brand and is not available to purchase from any other manufacturer.

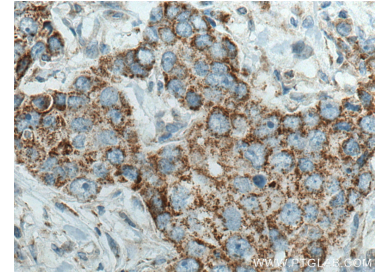
Selected Validation Data



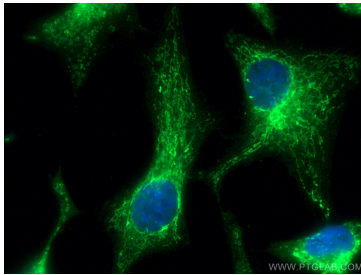
Various lysates were subjected to SDS PAGE followed by western blot with 17146-1-AP (PYCR2 antibody) at dilution of 1:5000 incubated at room temperature for 1.5 hours.



Immunohistochemical analysis of paraffin-embedded human breast cancer tissue slide using 17146-1-AP (PYCR2 antibody) at dilution of 1:3000 (under 10x lens). Heat mediated antigen retrieval with Tris-EDTA buffer (pH 9.0).



Immunohistochemical analysis of paraffin-embedded human breast cancer tissue slide using 17146-1-AP (PYCR2 antibody) at dilution of 1:3000 (under 40x lens). Heat mediated antigen retrieval with Tris-EDTA buffer (pH 9.0).



Immunofluorescent analysis of (4% PFA) fixed HeLa cells using PYCR2 antibody (17146-1-AP) at dilution of 1:400 and CoralLite®488-Conjugated AffiniPure Goat Anti-Rabbit IgG(H+L).