

For Research Use Only

FAM160B2 Polyclonal antibody

Catalog Number: 17147-1-AP **1 Publications**



Basic Information

Catalog Number: 17147-1-AP	GenBank Accession Number: BC012865	Purification Method: Antigen affinity purification
Size: 150ul, Concentration: 260 µg/ml by Nanodrop and 133 µg/ml by Bradford method using BSA as the standard;	GeneID (NCBI): 64760	Recommended Dilutions: WB 1:500-1:1000 IP 0.5-4.0 ug for IP and 1:200-1:1000
Source: Rabbit	Full Name: family with sequence similarity 160, member B2	for WB: IHC 1:20-1:200 IF 1:50-1:500
Isotype: IgG	Calculated MW: 743 aa, 82 kDa	
Immunogen Catalog Number: AG10920	Observed MW: 82 kDa	

Applications

Tested Applications: IF, IHC, IP, WB, ELISA	Positive Controls:
Cited Applications: WB	WB: human brain tissue,
Species Specificity: human	IP: HepG2 cells,
Cited Species: human	IHC: human brain tissue, IF: A549 cells,

Note-IHC: suggested antigen retrieval with TE buffer pH 9.0; (*) Alternatively, antigen retrieval may be performed with citrate buffer pH 6.0

Background Information

FAM160B2, also named as RAI16, may play a role in early lens development in mammals and in upregulation of genes in CD34+ cells in coronary artery disease patients.

Notable Publications

Author	Pubmed ID	Journal	Application
Cui-Ling Ding	32014455	Mol Cell Endocrinol	WB

Storage

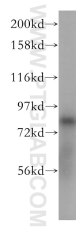
Storage:
Store at -20°C. Stable for one year after shipment.
Storage Buffer:
PBS with 0.02% sodium azide and 50% glycerol pH 7.3.
Aliquoting is unnecessary for -20°C storage

*** 20ul sizes contain 0.1% BSA

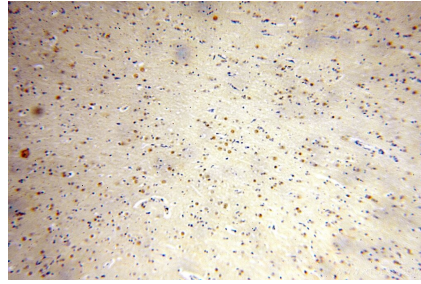
For technical support and original validation data for this product please contact:
T: 1 (888) 4PTGLAB (1-888-478-4522) (toll free in USA), or 1(312) 455-8498 (outside USA) E: proteintech@ptglab.com W: ptglab.com

This product is exclusively available under Proteintech Group brand and is not available to purchase from any other manufacturer.

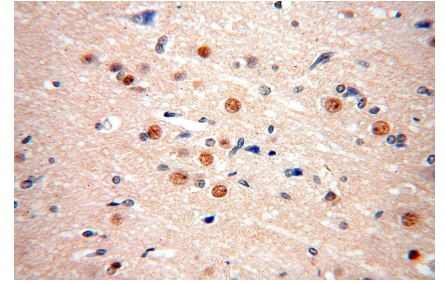
Selected Validation Data



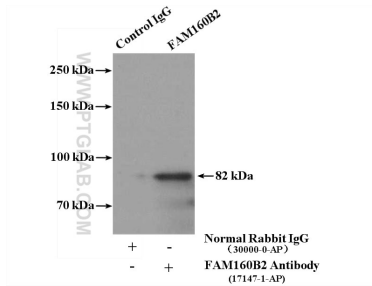
human brain tissue were subjected to SDS PAGE followed by western blot with 17147-1-AP (FAM160B2 antibody) at dilution of 1:500 incubated at room temperature for 1.5 hours.



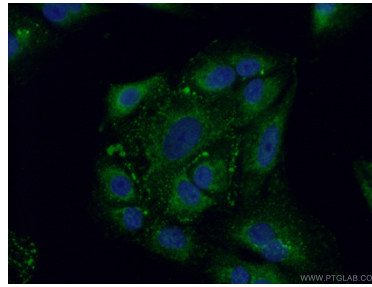
Immunohistochemical analysis of paraffin-embedded human brain using 17147-1-AP (FAM160B2 antibody) at dilution of 1:100 (under 10x lens).



Immunohistochemical analysis of paraffin-embedded human brain using 17147-1-AP (FAM160B2 antibody) at dilution of 1:100 (under 40x lens).



IP Result of anti-FAM160B2 (IP:17147-1-AP, 4ug; Detection:17147-1-AP 1:300) with HepG2 cells lysate 3200ug.



Immunofluorescent analysis of (-20°C Ethanol) fixed A549 cells using 17147-1-AP (FAM160B2 antibody) at dilution of 1:50 and Alexa Fluor 488-conjugated AffiniPure Goat Anti-Rabbit IgG(H+L).