

For Research Use Only

# LRRC8A/SWELL1 Polyclonal antibody

Catalog Number: 17155-1-AP

2 Publications



## Basic Information

### Catalog Number:

17155-1-AP

### Size:

150ul, Concentration: 260 ug/ml by Nanodrop and 133 ug/ml by Bradford method using BSA as the standard;

### Source:

Rabbit

### Isotype:

IgG

### Immunogen Catalog Number:

AG10062

### GenBank Accession Number:

BC051322

### GeneID (NCBI):

56262

### UNIPROT ID:

Q8IWT6

### Full Name:

leucine rich repeat containing 8 family, member A

### Calculated MW:

810 aa, 94 kDa

### Observed MW:

94 kDa

### Purification Method:

Antigen affinity purification

### Recommended Dilutions:

WB: 1:200-1:1000

IP: 0.5-4.0 ug for 1.0-3.0 mg of total protein lysate

IHC: 1:50-1:500

## Applications

### Tested Applications:

WB, IHC, IP, ELISA

### Cited Applications:

WB, IHC, IF

### Species Specificity:

human, mouse, rat

### Cited Species:

human

### Positive Controls:

WB: rat lung tissue,

IP: mouse brain tissue,

IHC: human colon cancer tissue,

**Note-IHC: suggested antigen retrieval with TE buffer pH 9.0; (\*) Alternatively, antigen retrieval may be performed with citrate buffer pH 6.0**

## Background Information

LRRC8A, also named as SWELL1, KIAA1437 and LRRC8, belongs to the LRRC8 family. LRRC8A is a ubiquitous and integral component of the VRAC and has been reported to be required for regulation of cell volume. It indicates that LRRC8A plays a role in regulating the flow of ions, especially anions, into and out of cells (PMID: 32079488). Additionally, there have been several reports that LRRC8A is critical for differentiation of adipocytes and lymphocytes (PMID: 31323188). The molecular weight of LRRC8A is 94 kDa.

## Notable Publications

Author	Pubmed ID	Journal	Application
Yanjie Chen	36632452	Int J Biol Sci	IHC
Feng Zhang	39909992	Inflammation	WB,IF

## Storage

### Storage:

Store at -20°C. Stable for one year after shipment.

### Storage Buffer:

PBS with 0.02% sodium azide and 50% glycerol, pH7.3

Aliquoting is unnecessary for -20°C storage

\*\*\* 20ul sizes contain 0.1% BSA

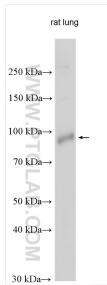
For technical support and original validation data for this product please contact:

T: 1 (888) 4PTGLAB (1-888-478-4522) (toll free in USA), or 1(312) 455-8498 (outside USA)

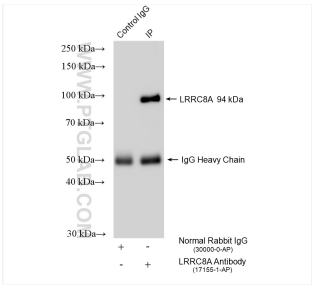
E: [proteintech@ptglab.com](mailto:proteintech@ptglab.com)  
W: [ptglab.com](http://ptglab.com)

This product is exclusively available under Proteintech Group brand and is not available to purchase from any other manufacturer.

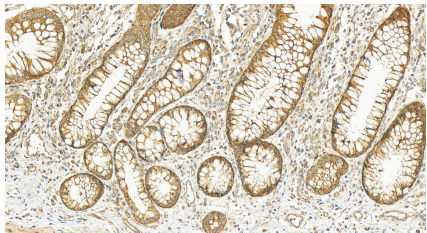
Selected Validation Data



rat lung tissue were subjected to SDS PAGE followed by western blot with 17155-1-AP (LRRC8A/SWELL1 antibody) at dilution of 1:300 incubated at room temperature for 1.5 hours.



IP result of anti-LRRC8A/SWELL1 (IP:17155-1-AP, 4ug; Detection:17155-1-AP 1:800) with mouse brain tissue lysate 2100 ug.



Immunohistochemical analysis of paraffin-embedded human colon cancer tissue slide using 17155-1-AP (LRRC8A/SWELL1 antibody) at dilution of 1:200 (under 20x lens). Heat mediated antigen retrieval with Tris-EDTA buffer (pH 9.0).