

For Research Use Only

LRRC8A/SWELL1 Polyclonal antibody, PBS Only

Catalog Number: 17155-1-PBS



Basic Information

Catalog Number:

17155-1-PBS

Size:

100ug, Concentration: 1 mg/ml by
Nanodrop;

Source:

Rabbit

Isotype:

IgG

Immunogen Catalog Number:

AG10062

GenBank Accession Number:

BC051322

GeneID (NCBI):

56262

UNIPROT ID:

Q8IWT6

Full Name:

leucine rich repeat containing 8
family, member A

Calculated MW:

810 aa, 94 kDa

Observed MW:

94 kDa

Purification Method:

Antigen affinity purification

Applications

Tested Applications:

WB, IP, Indirect ELISA

Species Specificity:

human, mouse, rat

Background Information

LRRC8A, also named as SWELL1, KIAA1437, and LRRC8, belongs to the LRRC8 family. LRRC8A is the essential subunit of the volume-regulated anion channel (VRAC), a key regulator of cell volume homeostasis. It forms heteromeric channels with other LRRC8 family members (B-E) to transport chloride, organic osmolytes, and drugs. This channel is crucial for processes like regulatory volume decrease (RVD), cell proliferation, and migration. Dysfunction of LRRC8A-VRAC is implicated in cancer chemotherapy resistance, stroke, and immune disorders (PMID: 24790029, PMID: 39550567, PMID: 40642832). The molecular weight of LRRC8A is 94 kDa.

Storage

Storage:

Store at -80°C.

Storage Buffer:

PBS only, pH7.3

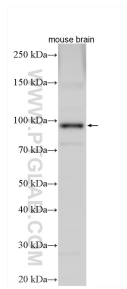
For technical support and original validation data for this product please contact:

T: 1 (888) 4PTGLAB (1-888-478-4522) (toll free
in USA), or 1(312) 455-8498 (outside USA)

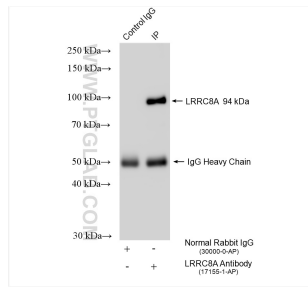
E: proteintech@ptglab.com
W: ptglab.com

This product is exclusively available under Proteintech Group brand and is not available to purchase from any other manufacturer.

Selected Validation Data



Mouse brain tissue were subjected to SDS PAGE followed by western blot with 17155-1-AP (LRRC8A/SWELL1 antibody) at dilution of 1:500 incubated at room temperature for 1.5 hours. This data was developed using the same antibody clone with 17155-1-PBS in a different storage buffer formulation.



IP result of anti-LRRC8A/SWELL1 (IP:17155-1-AP, 4ug; Detection:17155-1-AP 1:800) with mouse brain tissue lysate 2100 ug. This data was developed using the same antibody clone with 17155-1-PBS in a different storage buffer formulation.