

For Research Use Only

# C4 Gamma Chain Polyclonal antibody

Catalog Number: 17160-1-AP



## Basic Information

<b>Catalog Number:</b> 17160-1-AP	<b>GenBank Accession Number:</b> BC012372	<b>Purification Method:</b> Antigen affinity purification
<b>Size:</b> 150ul , Concentration: 240 ug/ml by Nanodrop and 133 ug/ml by Bradford method using BSA as the standard;	<b>GeneID (NCBI):</b> 720	<b>Recommended Dilutions:</b> WB 1:2000-1:10000 IHC 1:200-1:800
<b>Source:</b> Rabbit	<b>UNIPROT ID:</b> POCOL4	
<b>Isotype:</b> IgG	<b>Full Name:</b> complement component 4A (Rodgers blood group)	
<b>Immunogen Catalog Number:</b> AG10449	<b>Calculated MW:</b> 1744 aa, 193 kDa	
	<b>Observed MW:</b> 30-35 kDa	

## Applications

<b>Tested Applications:</b> WB, IHC, ELISA	<b>Positive Controls:</b>
<b>Species Specificity:</b> human	<b>WB :</b> human plasma,
<b>Note-IHC:</b> suggested antigen retrieval with <b>TE buffer pH 9.0; (*) Alternatively, antigen retrieval may be performed with citrate buffer pH 6.0</b>	<b>IHC :</b> human liver cancer tissue,

## Background Information

Complement C4, a component of the classical complement pathway, has an important role in innate immune function. C4 protein is expressed as a single chain precursor which is proteolytically cleaved into a trimer of alpha, beta, and gamma chains (molecular weights 95, 78, and 31 kDa) prior to secretion. The alpha chain is cleaved to release C4 anaphylatoxin, an antimicrobial peptide and a mediator of local inflammation. This antibody raised against 1543-1744aa of human C4A protein recognizes the C4 gamma chain.

## Storage

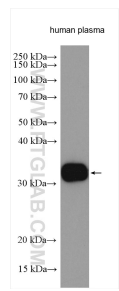
**Storage:**  
Store at -20°C. Stable for one year after shipment.  
**Storage Buffer:**  
PBS with 0.02% sodium azide and 50% glycerol pH 7.3.  
**Aliquoting is unnecessary for -20°C storage**

\*\*\* 20ul sizes contain 0.1% BSA

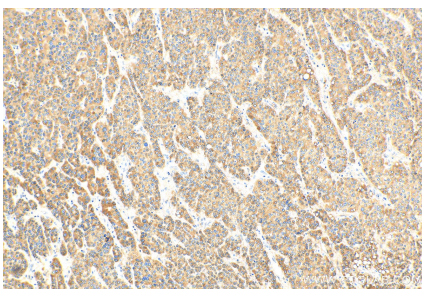
For technical support and original validation data for this product please contact:  
T: 1 (888) 4PTGLAB (1-888-478-4522) (toll free in USA), or 1(312) 455-8498 (outside USA)  
E: [proteintech@ptglab.com](mailto:proteintech@ptglab.com)  
W: [ptglab.com](http://ptglab.com)

This product is exclusively available under Proteintech Group brand and is not available to purchase from any other manufacturer.

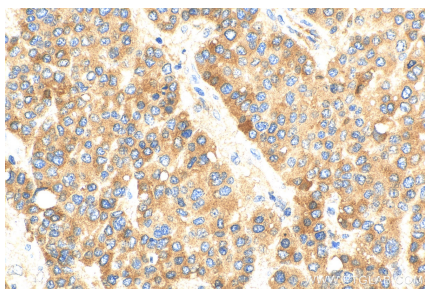
## Selected Validation Data



human plasma were subjected to SDS PAGE followed by western blot with 17160-1-AP (C4 Gamma Chain antibody) at dilution of 1:5000 incubated at room temperature for 1.5 hours.



Immunohistochemical analysis of paraffin-embedded human liver cancer tissue slide using 17160-1-AP (C4 Gamma Chain antibody) at dilution of 1:400 (under 10x lens). Heat mediated antigen retrieval with Tris-EDTA buffer (pH 9.0).



Immunohistochemical analysis of paraffin-embedded human liver cancer tissue slide using 17160-1-AP (C4 Gamma Chain antibody) at dilution of 1:400 (under 40x lens). Heat mediated antigen retrieval with Tris-EDTA buffer (pH 9.0).