

For Research Use Only

LOH12CR1 Polyclonal antibody

Catalog Number: 17169-1-AP

Featured Product

4 Publications



Basic Information

Catalog Number:

17169-1-AP

Size:

150ul, Concentration: 700 ug/ml by Nanodrop and 333 ug/ml by Bradford method using BSA as the standard;

Source:

Rabbit

Isotype:

IgG

Immunogen Catalog Number:

AG10695

GenBank Accession Number:

BC013668

GeneID (NCBI):

118426

UNIPROT ID:

Q969J3

Full Name:

loss of heterozygosity, 12, chromosomal region 1

Calculated MW:

196 aa, 22 kDa

Observed MW:

17-22 kDa

Purification Method:

Antigen affinity purification

Recommended Dilutions:

WB 1:500-1:2000

IHC 1:50-1:500

IF/ICC 1:50-1:500

Applications

Tested Applications:

WB, IHC, IF/ICC, ELISA

Cited Applications:

WB

Species Specificity:

human

Cited Species:

human, mouse

Note-IHC: suggested antigen retrieval with TE buffer pH 9.0; (*) Alternatively, antigen retrieval may be performed with citrate buffer pH 6.0

Positive Controls:

WB : HeLa cells, Jurkat cells, K-562 cells

IHC : human lung cancer tissue, human liver cancer tissue

IF/ICC : U2OS cells,

Background Information

LOH12CR1, also named as BORCS5, is part of the BORC complex may play a role in lysosomes movement and localization at the cell periphery. It may indirectly play a role in cell spreading and motility. LOH12CR1 has two isoforms with MW 17 kDa and 22 kDa.

Notable Publications

Author	Pubmed ID	Journal	Application
Maryline Santerre	33890542	Autophagy	WB
Jing Pu	25898167	Dev Cell	WB
Greta Pintacuda	36950384	Cell Genom	WB

Storage

Storage:

Store at -20°C. Stable for one year after shipment.

Storage Buffer:

PBS with 0.02% sodium azide and 50% glycerol pH 7.3.

Aliquoting is unnecessary for -20°C storage

*** 20ul sizes contain 0.1% BSA

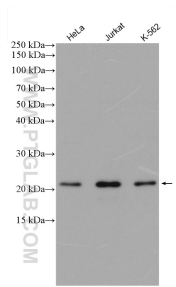
For technical support and original validation data for this product please contact:

T: 1 (888) 4PTGLAB (1-888-478-4522) (toll free in USA), or 1(312) 455-8498 (outside USA)

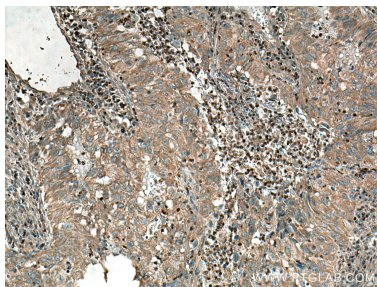
E: proteintech@ptglab.com
W: ptglab.com

This product is exclusively available under Proteintech Group brand and is not available to purchase from any other manufacturer.

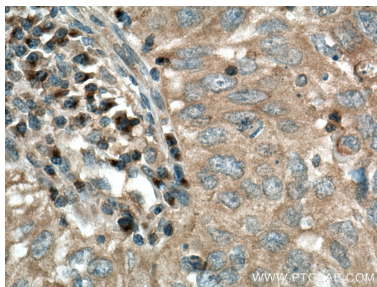
Selected Validation Data



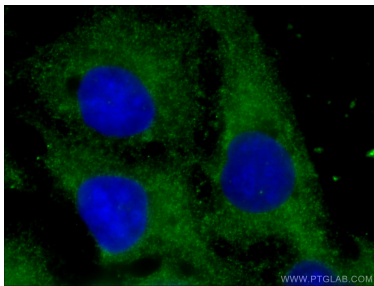
Various lysates were subjected to SDS PAGE followed by western blot with 17169-1-AP (LOH12CR1 antibody) at dilution of 1:1000 incubated at room temperature for 1.5 hours.



Immunohistochemical analysis of paraffin-embedded human lung cancer tissue slide using 17169-1-AP (LOH12CR1 antibody) at dilution of 1:200 (under 10x lens). Heat mediated antigen retrieval with Tris-EDTA buffer (pH 9.0).



Immunohistochemical analysis of paraffin-embedded human lung cancer tissue slide using 17169-1-AP (LOH12CR1 antibody) at dilution of 1:200 (under 40x lens). Heat mediated antigen retrieval with Tris-EDTA buffer (pH 9.0).



Immunofluorescent analysis of (-20°C Ethanol) fixed U2OS cells using 17169-1-AP (LOH12CR1 antibody) at dilution of 1:200 and CoraLite488-Conjugated AffiniPure Goat Anti-Rabbit IgG(H+L).