

For Research Use Only

# PSCA Polyclonal antibody

Catalog Number: 17171-1-AP



## Basic Information

<b>Catalog Number:</b> 17171-1-AP	<b>GenBank Accession Number:</b> BC023582	<b>Purification Method:</b> Antigen affinity purification
<b>Size:</b> 150ul , Concentration: 300 µg/ml by Nanodrop and 133 µg/ml by Bradford method using BSA as the standard;	<b>GeneID (NCBI):</b> 8000	<b>Recommended Dilutions:</b> WB 1:500-1:2000
<b>Source:</b> Rabbit	<b>Full Name:</b> prostate stem cell antigen	
<b>Isotype:</b> IgG	<b>Calculated MW:</b> 123 aa, 13 kDa	
<b>Immunogen Catalog Number:</b> AG10710	<b>Observed MW:</b> 36 kDa	

## Applications

<b>Tested Applications:</b> WB, ELISA	<b>Positive Controls:</b> WB : mouse kidney tissue, PC-3 cells, mouse skeletal muscle tissue
<b>Species Specificity:</b> human, mouse	

## Background Information

Prostate stem cell antigen (PSCA) is a protein composed of 123 amino acid residues. PSCA belongs to the LY-6/Thy-1 family of cell surface antigens. It is highly expressed in normal prostate and further up-regulated in prostate cancer, as well as non-prostatic malignancies including gastric cancer. PSCA plays a critical role in cell adhesion, proliferation, and survival. The observed MW of PSCA is between 36 to 40 kDa in paper (PMID: 11309275).

## Storage

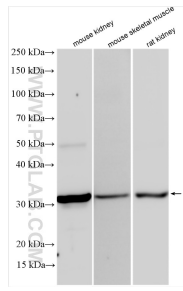
**Storage:**  
Store at -20°C. Stable for one year after shipment.  
**Storage Buffer:**  
PBS with 0.02% sodium azide and 50% glycerol pH 7.3.  
Aliquoting is unnecessary for -20°C storage

\*\*\* 20ul sizes contain 0.1% BSA

For technical support and original validation data for this product please contact:  
T: 1 (888) 4PTGLAB (1-888-478-4522) (toll free in USA), or 1(312) 455-8498 (outside USA)  
E: proteintech@ptglab.com  
W: ptglab.com

This product is exclusively available under Proteintech Group brand and is not available to purchase from any other manufacturer.

## Selected Validation Data



Various lysates were subjected to SDS PAGE followed by western blot with 17171-1-AP (PSCA antibody) at dilution of 1:1000 incubated at room temperature for 1.5 hours.