

For Research Use Only

LETM2 Polyclonal antibody, PBS Only

Catalog Number: 17180-1-PBS

Featured Product



Basic Information

Catalog Number:

17180-1-PBS

Size:

100ug, Concentration: 1 mg/ml by Nanodrop;

Source:

Rabbit

Isotype:

IgG

Immunogen Catalog Number:

AG10900

GenBank Accession Number:

BC029541

GeneID (NCBI):

137994

UNIPROT ID:

Q2VYF4

Full Name:

leucine zipper-EF-hand containing transmembrane protein 2

Calculated MW:

277 aa, 31 kDa

Purification Method:

Antigen affinity purification

Applications

Tested Applications:

IHC, Indirect ELISA

Species Specificity:

human

Storage

Storage:

Store at -80°C.

Storage Buffer:

PBS only, pH7.3

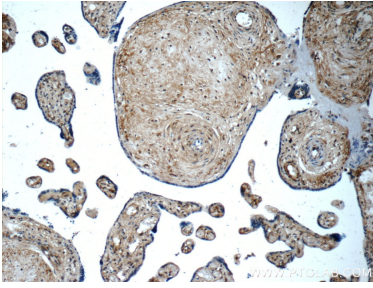
For technical support and original validation data for this product please contact:

T: 1 (888) 4PTGLAB (1-888-478-4522) (toll free in USA), or 1(312) 455-8498 (outside USA)

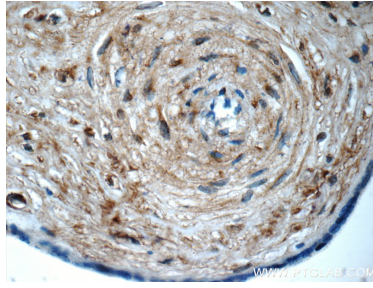
E: proteintech@ptglab.com
W: ptglab.com

This product is exclusively available under Proteintech Group brand and is not available to purchase from any other manufacturer.

Selected Validation Data



Immunohistochemical analysis of paraffin-embedded human placenta tissue slide using 17180-1-AP (LETM2 Antibody) at dilution of 1:50 (under 10x lens). This data was developed using the same antibody clone with 17180-1-PBS in a different storage buffer formulation.



Immunohistochemical analysis of paraffin-embedded human placenta tissue slide using 17180-1-AP (LETM2 Antibody) at dilution of 1:50 (under 40x lens). This data was developed using the same antibody clone with 17180-1-PBS in a different storage buffer formulation.