

For Research Use Only

AFAP1L2 Polyclonal antibody

Catalog Number: 17183-1-AP

Featured Product

6 Publications



Basic Information

Catalog Number:

17183-1-AP

Size:

150ul, Concentration: 450 ug/ml by Nanodrop and 300 ug/ml by Bradford method using BSA as the standard;

Source:

Rabbit

Isotype:

IgG

Immunogen Catalog Number:

AG10966

GenBank Accession Number:

BC033212

GeneID (NCBI):

84632

UNIPROT ID:

Q8N4X5

Full Name:

actin filament associated protein 1-like 2

Calculated MW:

818 aa, 91 kDa

Observed MW:

130 kDa

Purification Method:

Antigen affinity purification

Recommended Dilutions:

WB 1:500-1:2000

IP 0.5-4.0 ug for 1.0-3.0 mg of total protein lysate

IHC 1:50-1:500

Applications

Tested Applications:

WB, IP, IHC, ELISA

Cited Applications:

WB, IHC, IF

Species Specificity:

human, mouse

Cited Species:

human, mouse

Note-IHC: suggested antigen retrieval with TE buffer pH 9.0; (*) Alternatively, antigen retrieval may be performed with citrate buffer pH 6.0

Positive Controls:

WB : A549 cells, mouse thymus tissue

IP : mouse thymus tissue,

IHC : human thymus tissue,

Background Information

AFAP1L2, also named as Actin filament-associated protein 1-like 2 or XB130, is a 818 amino acid protein, which contains two PH domains. AFAP1L2 is detected in spleen and thyroid, and at lower levels in kidney, brain, lung and pancreas. AFAP1L2 localizes in the cytoplasm and may play a role in a signaling cascade by enhancing the kinase activity of SRC. AFAP1L2 promotes thyroid tumor growth, and its expression in these cancer cells may affect cell proliferation and survival by controlling the expression of multiple genes, especially transcription regulators.

Notable Publications

Author	Pubmed ID	Journal	Application
Hae-Ra Cho	30820526	Carcinogenesis	IHC
Min Yu	37925638	Cell Rep	IF, WB, IHC
Zhaochen Ma	37733919	Autophagy	WB, IF

Storage

Storage:

Store at -20°C. Stable for one year after shipment.

Storage Buffer:

PBS with 0.02% sodium azide and 50% glycerol pH 7.3.

Aliquoting is unnecessary for -20°C storage

*** 20ul sizes contain 0.1% BSA

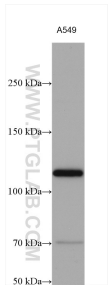
For technical support and original validation data for this product please contact:

T: 1 (888) 4PTGLAB (1-888-478-4522) (toll free in USA), or 1(312) 455-8498 (outside USA)

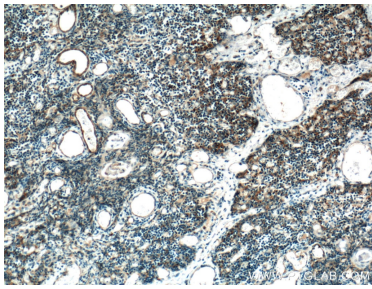
E: proteintech@ptglab.com
W: ptglab.com

This product is exclusively available under Proteintech Group brand and is not available to purchase from any other manufacturer.

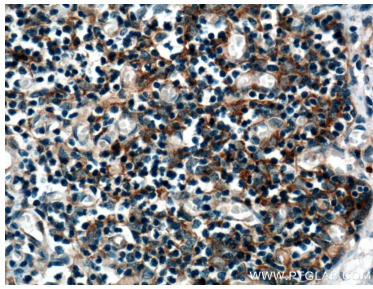
Selected Validation Data



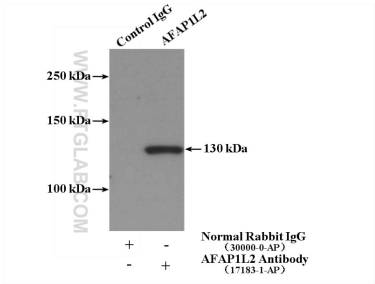
A549 were subjected to SDS PAGE followed by western blot with 17183-1-AP (AFAP1L2 antibody) at dilution of 1:1000 incubated at room temperature for 1.5 hours.



Immunohistochemical analysis of paraffin-embedded human thymus tissue slide using 17183-1-AP (AFAP1L2 antibody) at dilution of 1:200 (under 10x lens. Heat mediated antigen retrieval with Tris-EDTA buffer (pH 9.0).



Immunohistochemical analysis of paraffin-embedded human thymus tissue slide using 17183-1-AP (AFAP1L2 antibody) at dilution of 1:200 (under 40x lens. Heat mediated antigen retrieval with Tris-EDTA buffer (pH 9.0).



IP result of anti-AFAP1L2 (IP:17183-1-AP, 4ug; Detection:17183-1-AP 1:500) with mouse thymus tissue lysate 2800ug.