

For Research Use Only

METTL11A Polyclonal antibody

Catalog Number: 17184-1-AP



Basic Information

Catalog Number: 17184-1-AP	GenBank Accession Number: BC033234	Purification Method: Antigen affinity purification
Size: 150ul , Concentration: 350 ug/ml by Nanodrop and 220 ug/ml by Bradford method using BSA as the standard;	GeneID (NCBI): 28989	Recommended Dilutions: WB 1:1000-1:8000 IHC 1:50-1:500
Source: Rabbit	UNIPROT ID: Q9BV86	
Isotype: IgG	Full Name: methyltransferase like 11A	
Immunogen Catalog Number: AG10967	Calculated MW: 223 aa, 25 kDa	
	Observed MW: 16 kDa, 26 kDa	

Applications

Tested Applications: WB, IHC, ELISA	Positive Controls:
Species Specificity: human, mouse, rat	WB : A431 cells, HEK-293T cells, HepG2 cells, mouse testis tissue, rat testis tissue
Note-IHC: suggested antigen retrieval with TE buffer pH 9.0; (*) Alternatively, antigen retrieval may be performed with citrate buffer pH 6.0	IHC : human ovary cancer tissue,

Background Information

METTL11A, also known as NTMT1 (N^o-trimethyllysine hydrolase), is an enzyme that belongs to the methyltransferase-like (METTL) protein family. It plays a crucial role in epigenetic processes, particularly in the methylation of proteins, which can influence gene expression and other cellular functions. METTL11A is regulated by other members of the METTL family, such as METTL11B and METTL13, which can either activate or inhibit its function.

Storage

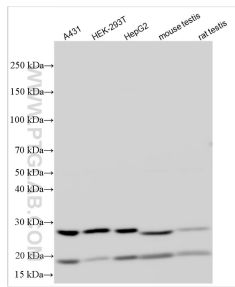
Storage:
Store at -20°C. Stable for one year after shipment.
Storage Buffer:
PBS with 0.02% sodium azide and 50% glycerol pH 7.3.
Aliquoting is unnecessary for -20°C storage

*** 20ul sizes contain 0.1% BSA

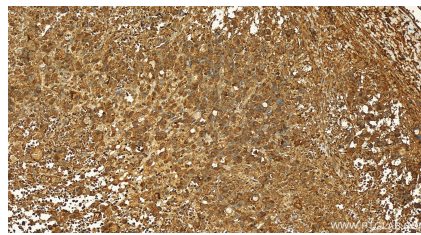
For technical support and original validation data for this product please contact:
T: 1 (888) 4PTGLAB (1-888-478-4522) (toll free in USA), or 1(312) 455-8498 (outside USA)
E: proteintech@ptglab.com
W: ptglab.com

This product is exclusively available under Proteintech Group brand and is not available to purchase from any other manufacturer.

Selected Validation Data



Various lysates were subjected to SDS PAGE followed by western blot with 17184-1-AP (METTL11A antibody) at dilution of 1:4000 incubated at room temperature for 1.5 hours.



Immunohistochemical analysis of paraffin-embedded human ovary cancer tissue slide using 17184-1-AP (METTL11A antibody) at dilution of 1:100 (under 20x lens). Heat mediated antigen retrieval with Tris-EDTA buffer (pH 9.0).