

For Research Use Only

# METTL11A Polyclonal antibody, PBS Only

Catalog Number: 17184-1-PBS



## Basic Information

<b>Catalog Number:</b> 17184-1-PBS	<b>GenBank Accession Number:</b> BC033234	<b>Purification Method:</b> Antigen affinity purification
<b>Size:</b> 100ug, Concentration: 1 mg/ml by Nanodrop;	<b>GeneID (NCBI):</b> 28989	
<b>Source:</b> Rabbit	<b>UNIPROT ID:</b> Q9BV86	
<b>Isotype:</b> IgG	<b>Full Name:</b> methyltransferase like 11A	
<b>Immunogen Catalog Number:</b> AG10967	<b>Calculated MW:</b> 223 aa, 25 kDa	
	<b>Observed MW:</b> 16 kDa, 26 kDa	

## Applications

**Tested Applications:**  
WB, IHC, IF/ICC, Indirect ELISA

**Species Specificity:**  
human, mouse, rat

## Background Information

METTL11A, also known as NTMT1 (N<sup>o</sup>-trimethyllysine hydrolase), is an enzyme that belongs to the methyltransferase-like (METTL) protein family. It plays a crucial role in epigenetic processes, particularly in the methylation of proteins, which can influence gene expression and other cellular functions. METTL11A is regulated by other members of the METTL family, such as METTL11B and METTL13, which can either activate or inhibit its function.

## Storage

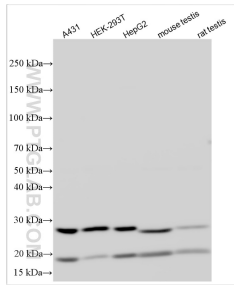
**Storage:**  
Store at -80°C.

**Storage Buffer:**  
PBS only, pH7.3

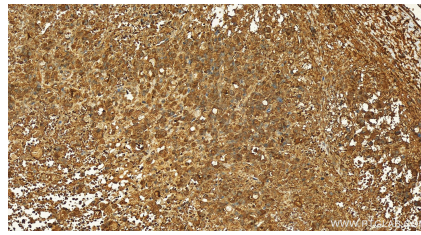
For technical support and original validation data for this product please contact:  
T: 1 (888) 4PTGLAB (1-888-478-4522) (toll free in USA), or 1(312) 455-8498 (outside USA)      E: [proteintech@ptglab.com](mailto:proteintech@ptglab.com)  
W: [ptglab.com](http://ptglab.com)

**This product is exclusively available under Proteintech Group brand and is not available to purchase from any other manufacturer.**

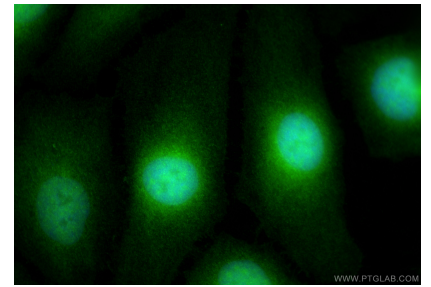
## Selected Validation Data



Various lysates were subjected to SDS PAGE followed by western blot with 17184-1-AP (METTL11A antibody) at dilution of 1:4000 incubated at room temperature for 1.5 hours. This data was developed using the same antibody clone with 17184-1-PBS in a different storage buffer formulation.



Immunohistochemical analysis of paraffin-embedded human ovary cancer tissue slide using 17184-1-AP (METTL11A antibody) at dilution of 1:100 (under 20x lens). Heat mediated antigen retrieval with Tris-EDTA buffer (pH 9.0). This data was developed using the same antibody clone with 17184-1-PBS in a different storage buffer formulation.



Immunofluorescent analysis of (4% PFA) fixed HeLa cells using METTL11A antibody (17184-1-AP) at dilution of 1:400 and Coralite@488-Conjugated Goat Anti-Rabbit IgG(H+L) (SA00013-2). This data was developed using the same antibody clone with 17184-1-PBS in a different storage buffer formulation.